

Antelope View Charter School

RECORD OF FRIABLE AND NON-FRIABLE ACM
(FORM B)

Inspection Date: November 6, 2020

THREE-YEAR REINSPECTION

					CDS CODE 34-73973-6032916	
SCHOOL ANTELOPE VIEW CHARTER SCHOOL - NO LONGER IN OPERATION AS OF JULY 2017 - FACILITY IS NOW GENERAL DISTRICT OFFICES					SCHOOL PHONE NUMBER (916) 338-6450	
ADDRESS 8300 Watt Avenue	(NUMBER)	(STREET)	(CITY) Antelope, CA	(ZIP) 95843		

-IMPORTANT-

Each building and functional space with friable ACBM or friable assumed ACBM listed on this form requires completion of FORM C (PHYSICAL AND HAZARD ASSESSMENT OF FRIABLE ACBM OR FRIABLE ASSUMED ACBM). Indicate location of material on blueprint, diagram or narrative in square or linear feet, and attach a copy (Sec. 763.93).

LINE	BUILDING NAME & FUNCTIONAL SPACE (Indicate Address if Different From Above)	CHECK ONE			CHECK ONE			
		SUR- FACING	TSI	MISC	ACBM		ASSUMED ACBM	
					FRIABLE	NON-FRIABLE	FRIABLE	NON-FRIABLE
1.	UNIT A (MPR)	X		X		X		X
2.	UNITS B & C	X		X				X
3.	UNIT D (ADMINISTRATION & ROOM 47)			X				X
4.	UNIT E (PORTABLE CLASSROOMS 22-24)			X				X
5.	UNIT F (CLASSROOMS 2, 3, & RESTROOMS)			X				X
6.	UNIT G (PORTABLE CLASSROOMS 19-21)			X				X
7.	COMPUTER LAB (FKA: UNIT H - NEW BUILDING) DISTRICT MUST CERTIFY							
8.	UNIT J1 - CLASSROOM 4	X						X
9.								
10.								
11.								
12.								
13.								
14.								
15.								

C:\Users\selbert\Entek Consulting Group, Inc\Entekgroup - Documents\Clients\Center USD\20-5551 3 Yr Reinspections\Sites\Antelope View Charter School\AVC Form B.wpd

See attached "Homogeneous Materials Records" for all materials and their locations by building. On Form B all buildings are listed, and a summary of all non-friable and friable material is provided. Friable materials and their locations are listed separately under each building on Form B.

THREE-YEAR REINSPECTION HOMOGENEOUS ACBM RECORDS

Date of Inspection: November 6, 2020

District: Center Unified School District

Inspector: Matt Reilly

School: Antelope View Charter School (No Longer Operating as of July 2017)

Building: Unit A (MPR)

Material Class	Material	Homo Mat. #	% Asb.	Ft ² /L.F.	Location	Condition: Code & Comments	Friable Yes/No
M	DRYWALL & JOINT COMPOUND	1	NONE DETECTED	600 S	LOCKER ROOM, MECHANICAL ROOM, AND ABOVE COACHES RESTROOM	(13) REPRESENTED BY SAMPLES HMS-CJHS-S23-01A-E COLLECTED ON 5-1-92.	N
M	12" CEILING TILE (FISSURE PATTERN)	4	NONE DETECTED	4,325 S	MPR & BOILER ROOM	(13) REPRESENTED BY SAMPLES HMS-CJHS-S23-04A-C COLLECTED ON 5-1-92.	N
M	SHEET VINYL FLOORING (GRAY/WHITE)	8	NONE DETECTED	900 S	KITCHEN	(13) SAMPLES HMS-CJHS-S23-08A-C COLLECTED ON 5-1-92.	N
S	PLASTER	9	TRACE	5,000 S	BOY'S & GIRL'S RESTROOMS, P.E. STORAGE, LOCKER ROOMS AND KITCHEN	(1) (4)	N
M	12" VINYL FLOOR TILE (DARK BLUE) & MASTIC	20	ASSUMED POSITIVE	800 S	MPR	(1) (4)	N
M	12" VINYL FLOOR TILE (OFF WHITE) & MASTIC	126	NONE DETECTED	400 S	STORAGE/WATER HEATER	(13)	N
M	12" VINYL FLOOR TILE (LIGHT BLUE) & MASTIC	142	ASSUMED POSITIVE	1,200 S	MPR	(1) (4)	N
M	6" COVE BASE (CREAM) ADHESIVE	143	ASSUMED POSITIVE	200 L	MPR	(1) (4)	N
S	WALL TEXTURE (KNOCKDOWN STYLE)	147	ASSUMED POSITIVE	400 S	STORAGE/WATER HEATER AND CUSTODIAL ROOM AT GIRLS RESTROOM	(1) (4)	N
M	SHEET VINYL FLOORING - BLUE/WHITE	165	ASSUMED POSITIVE	100 S	GIRLS LOCKER ROOM COACH OFFICE	(1)	N

C:\Users\selbert\Entek Consulting Group, Inc\Entekgroup - Documents\Clients\Center USD\20-5551 3 Yr Reinspections\Sites\Antelope View Charter School\AVC HMR.wpd

CONDITION CODE

General Condition: (1) Good (2) Damaged (3) Significantly Damaged (25% or more)
Change in Condition: (4) No (5) Yes (If Yes, explain under comments)
Abated: (6) Repaired (7) Removed (8) Encapsulated (9) Enclosed (10) Isolated & Restricted
Miscellaneous: (11) Inaccessible, no inspection data (12) Other (Explain under comments) (13) Non-Asbestos/Not Inspected

CONSULT ORIGINAL AND SUPPLEMENTARY INSPECTION REPORTS FOR MATERIALS WITH TRACE AMOUNTS OF ASBESTOS

THREE-YEAR REINSPECTION HOMOGENEOUS ACBM RECORDS

Date of Inspection: November 6, 2020

District: Center Unified School District

Inspector: Matt Reilly

School: Antelope View Charter School (No Longer Operating as of July 2017)

Building: Units B & C

Material Class	Material	Homo. Mat. #	% Asb.	Ft ² /L.F.	Location	Condition: Code & Comments	Friable Yes/No
M	DRYWALL & JOINT COMPOUND	1	NONE DETECTED	6,100 S	MUSIC ROOM, CLASSROOM 45, AND ARTS & CRAFTS	(13) SAMPLE HMS-CJHS-S23-01E COLLECTED ON 5-1-92.	N
M	12" CEILING TILE (FISSURE PATTERN)	4	NONE DETECTED	1,600 S	MUSIC ROOM AND CLASSROOM 45	(13) REPRESENTED BY SAMPLES HMS-CJHS-S23-04A-C COLLECTED ON 5-1-92.	N
M	12" VINYL FLOOR TILE (OFF-WHITE) & MASTIC	7	NONE DETECTED	2,700 S	MUSIC ROOM, CLASSROOM 45, AND ARTS & CRAFTS	(13) REPRESENTED BY SAMPLE HMS-CJHS-07A COLLECTED ON 5-1-92.	N
M	12" VINYL FLOOR TILE (BLUE) & MASTIC	10	NONE DETECTED	300 S	MUSIC ROOM	(13) SAMPLE HMS-CJHS-S23-10A COLLECTED ON 5-1-92.	N
M	4" COVE BASE (BLACK) ADHESIVE	127	ASSUMED POSITIVE	200 L	CLASSROOM 44	(1) (4)	N
M	2' X 4' CEILING PANELS (FISSURE PATTERN)	144	ASSUMED POSITIVE	960 S	ARTS & CRAFTS ROOM (MIDDLE ROOM)	(1) (4) WATER STRAN IN STORAGE OF CRAFT ROOM.	N
S	WALL TEXTURE (ORANGE PEEL STYLE)	145	ASSUMED POSITIVE	2,000 S	CLASSROOMS 44 & 45	(1) (4)	N
S	WALL/CEILING TEXTURE (KNOCKDOWN)	147	ASSUMED POSITIVE	200 S	ROOM 45A AT STORAGE	(1) (4)	N

C:\Users\selbert\Entek Consulting Group, Inc\Entekgroup - Documents\Clients\Center USD\20-5551 3 Yr Reinspections\Sites\Antelope View Charter School\AVC HMR.wpd

CONDITION CODE

General Condition: (1) Good (2) Damaged (3) Significantly Damaged (25% or more)
Change in Condition: (4) No (5) Yes (If Yes, explain under comments)
Abated: (6) Repaired (7) Removed (8) Encapsulated (9) Enclosed (10) Isolated & Restricted
Miscellaneous: (11) Inaccessible, no inspection data (12) Other (Explain under comments) (13) Non-Asbestos/Not Inspected

CONSULT ORIGINAL AND SUPPLEMENTARY INSPECTION REPORTS FOR MATERIALS WITH TRACE AMOUNTS OF ASBESTOS

THREE-YEAR REINSPECTION HOMOGENEOUS ACBM RECORDS

Date of Inspection: November 6, 2020

District: Center Unified School District

Inspector: Matt Reilly

School: Antelope View Charter School (No Longer Operating as of July 2017)

Building: Unit D (Administration)

Material Class	Material	Homo. Mat. #	% Asb.	Ft ² /L.F.	Location	Condition: Code & Comments	Friable Yes/No
M	DRYWALL & JOINT COMPOUND	1	NONE DETECTED	9,000 S	ADMINISTRATION	(13) SAMPLE HMS-CJHS-S23-01A COLLECTED ON 5-1-92.	N
M	SHEET VINYL FLOORING (ORANGE)	2	NONE DETECTED	200 S	ADMINISTRATION & RESTROOM	(13) SAMPLE HMS-CJHS-S23-02A COLLECTED ON 5-1-92.	N
M	12" VINYL FLOOR TILE (OLIVE) & MASTIC	3	NONE DETECTED	600 S	ADMINISTRATION & COPY ROOM	(13) SAMPLE HMS-CJHS-S23-03A COLLECTED ON 5-1-92.	N
M	12" CEILING TILE	4	NONE DETECTED	900 S	LIBRARY	(13) SAMPLES HMS-CJHS-S23-04A-C COLLECTED ON 5-1-92.	N
S	WALL/CEILING TEXTURE (ORANGE PEEL STYLE)	149	ASSUMED POSITIVE	4,000S	ADMINISTRATION	(1) (4)	N
M	COVE BASE ADHESIVE	160	ASSUMED POSITIVE	500 L	ADMINISTRATION	(1) (4)	N
M	CARPET ADHESIVE	161	ASSUMED POSITIVE	3,000 S	THROUGHOUT	(1) (4)	N
M	2' X4' CEILING PANELS (FISSURE PATTERN)	162	ASSUMED POSITIVE	3,000 S	ADMINISTRATION	(1) (4)	Y

C:\Users\selbert\Entek Consulting Group, Inc\Entekgroup - Documents\Clients\Center USD\20-5551 3 Yr Reinspections\Sites\Antelope View Charter School\AVC HMR.wpd

CONDITION CODE

General Condition: (1) Good (2) Damaged (3) Significantly Damaged (25% or more)

Change in Condition: (4) No (5) Yes (If Yes, explain under comments)

Abated: (6) Repaired (7) Removed (8) Encapsulated (9) Enclosed (10) Isolated & Restricted

Miscellaneous: (11) Inaccessible, no inspection data (12) Other (Explain under comments) (13) Non-Asbestos/Not Inspected

CONSULT ORIGINAL AND SUPPLEMENTARY INSPECTION REPORTS FOR MATERIALS WITH TRACE AMOUNTS OF ASBESTOS

THREE-YEAR REINSPECTION HOMOGENEOUS ACBM RECORDS

Date of Inspection: November 6, 2020

District: Center Unified School District

Inspector: Matt Reilly

School: Antelope View Charter School (No Longer Operating as of July 2017)

Building: Unit E (Portable Classrooms 22-24)

Material Class	Material	Homo Mat. #	% Asb.	Ft ² /L.F.	Location	Condition: Code & Comments	Friable Yes/No
M	DRYWALL	99	ASSUMED POSITIVE	6,000 S	CLASSROOMS 22-24	(11) DRYWALL IS ASSUMED POSITIVE TO EXIST BEHIND ALL WALL SURFACES.	N
M	12" VINYL FLOOR TILE (LIGHT BROWN) & MASTIC	129	ASSUMED POSITIVE	36 S	CLASSROOM 24	(11) CARPET OVER THE TILE	N
M	4" COVE BASE (BLUE) ADHESIVE	153	ASSUMED POSITIVE	360 L	CLASSROOMS 22-24	(1) (4)	N
M	2' X 4' CEILING PANELS	N/A	NOT SUSPECT	1,800 S	CLASSROOMS 22-& 23	(13) VINYL COATED FIBERGLASS PANELS	Y
M	CARPET ADHESIVE	161	ASSUMED POSITIVE	1,800 S	CLASSROOMS 22 & 23	(1) (4)	N

C:\Users\selbert\Entek Consulting Group, Inc\Entekgroup - Documents\Clients\Center USD\20-5551 3 Yr Reinspections\Sites\Antelope View Charter School\AVC HMR.wpd

CONDITION CODE

General Condition: (1) Good (2) Damaged (3) Significantly Damaged (25% or more)
Change in Condition: (4) No (5) Yes (If Yes, explain under comments)
Abated: (6) Repaired (7) Removed (8) Encapsulated (9) Enclosed (10) Isolated & Restricted
Miscellaneous: (11) Inaccessible, no inspection data (12) Other (Explain under comments) (13) Non-Asbestos/Not Inspected

CONSULT ORIGINAL AND SUPPLEMENTARY INSPECTION REPORTS FOR MATERIALS WITH TRACE AMOUNTS OF ASBESTOS

THREE-YEAR REINSPECTION HOMOGENEOUS ACBM RECORDS

Date of Inspection: November 6, 2020

District: Center Unified School District

Inspector: Matt Reilly

School: Antelope View Charter School (No Longer Operating as of July 2017)

Building: Unit F (Classrooms 2, 3, & Restrooms)

Material Class	Material	Homo. Mat. #	% Asb.	Ft ² /L.F.	Location	Condition: Code & Comments	Friable Yes/No
M	DRYWALL & JOINT COMPOUND	1	NONE DETECTED	2,100 S	CLASSROOMS 2 & 3, RESTROOMS AND CUSTODIAL OFFICE	(13) SAMPLE HMS-CJHS-S23-01B COLLECTED ON 5-1-92.	N
S	WALL TEXTURE (ORANGE PEEL STYLE)	149	ASSUMED POSITIVE	UNDETERMINED	CLASSROOM 2	(1) (4)	N
M	12" VINYL FLOOR TILE (LIGHT BLUE) & MASTIC	151	ASSUMED POSITIVE	450 S	CLASSROOM 3	(1) (4)	N
M	12" VINYL FLOOR TILE (LIGHT GRAY) & MASTIC	152	ASSUMED POSITIVE	550 S	CLASSROOM 3, STORAGE ROOM AND WATER HEATER CLOSET, ROOM 2 AT KITCHENETTE	(1) (4)	N
M	2' X 4' CEILING PANELS (FISSURE PATTERN)	154	ASSUMED POSITIVE	1,500 S	CLASSROOMS 2 & 3	(1)	Y
M	4" COVE BASE (BLUE) ADHESIVE	153	ASSUMED POSITIVE	200 L	CLASSROOMS 2 & 3, STORAGE ROOM AND WATER HEATER CLOSET	(1) (4)	N
M	CARPET ADHESIVE	161	ASSUMED POSITIVE	900 S	CLASSROOM 2	(1) (4)	N
M	12" CEILING TILE (FISSURE PATTERN)	163	ASSUMED POSITIVE	900 S	CLASSROOM 2	(1) (4)	N
S	EXTERIOR STUCCO	164	ASSUMED POSITIVE	1,000 S	COVERED WALKWAY	(1) (4)	N

C:\Users\selbert\Entek Consulting Group, Inc\Entekgroup - Documents\Clients\Center USD\20-5551 3 Yr Reinspections\Sites\Antelope View Charter School\AVC HMR.wpd

CONDITION CODE

General Condition: (1) Good (2) Damaged (3) Significantly Damaged (25% or more)
Change in Condition: (4) No (5) Yes (If Yes, explain under comments)
Abated: (6) Repaired (7) Removed (8) Encapsulated (9) Enclosed (10) Isolated & Restricted
Miscellaneous: (11) Inaccessible, no inspection data (12) Other (Explain under comments) (13) Non-Asbestos/Not Inspected

CONSULT ORIGINAL AND SUPPLEMENTARY INSPECTION REPORTS FOR MATERIALS WITH TRACE AMOUNTS OF ASBESTOS

THREE-YEAR REINSPECTION HOMOGENEOUS ACBM RECORDS

Date of Inspection: November 6, 2020

District: Center Unified School District

Inspector: Matt Reilly

School: Antelope View Charter School (No Longer Operating as of July 2017)

Building: Unit G (Portable Classrooms 19-21)

Material Class	Material	Homo. Mat. #	% Asb.	Ft ² /L.F.	Location	Condition: Code & Comments	Friable Yes/No
M	DRYWALL	99	ASSUMED POSITIVE	2,100 S	CLASSROOMS 19-21	(11) DRYWALL IS ASSUMED TO EXIST BEHIND ALL WALL SURFACES.	N
M	4" COVE BASE (BROWN) ADHESIVE	130	ASSUMED POSITIVE	240 L	CLASSROOMS 20 & 21	(1) (4)	N
M	4" COVE BASE (GRAY) ADHESIVE	146	ASSUMED POSITIVE	120 L	CLASSROOM 19	(1) (4)	N
M	2' X 4' CEILING PANELS	N/A	NOT SUSPECT	2,700 S	CLASSROOMS 19-21	(13) VINYL COATED FIBERGLASS PANELS	N
M	CARPET ADHESIVE	161	ASSUMED POSITIVE	2,700 S	CLASSROOMS 19-21	(1) (4)	N

C:\Users\selbert\Entek Consulting Group, Inc\Entekgroup - Documents\Clients\Center USD\20-5551 3 Yr Reinspections\Sites\Antelope View Charter School\AVC HMR.wpd

CONDITION CODE

General Condition: (1) Good (2) Damaged (3) Significantly Damaged (25% or more)
Change in Condition: (4) No (5) Yes (If Yes, explain under comments)
Abated: (6) Repaired (7) Removed (8) Encapsulated (9) Enclosed (10) Isolated & Restricted
Miscellaneous: (11) Inaccessible, no inspection data (12) Other (Explain under comments) (13) Non-Asbestos/Not Inspected

CONSULT ORIGINAL AND SUPPLEMENTARY INSPECTION REPORTS FOR MATERIALS WITH TRACE AMOUNTS OF ASBESTOS

THREE-YEAR REINSPECTION HOMOGENEOUS ACBM RECORDS

Date of Inspection: November 6, 2020

District: Center Unified School District

Inspector: Matt Reilly

School: Antelope View Charter School (No Longer Operating as of July 2017)

Building: Unit J1 (Classroom 4)

Material Class	Material	Homo. Mat. #	% Asb.	Ft ² /L.F.	Location	Condition: Code & Comments	Friable Yes/No
M	DRYWALL & JOINT COMPOUND	1	NONE DETECTED	2,500 S	CLASSROOM 4	(13) SAMPLE HMS-CJHS-S23-01C COLLECTED ON 5-1-92.	N
M	12" CEILING TILE (FISSURE PATTERN)	4	NONE DETECTED	1,212 S	CLASSROOM 4	(13) REPRESENTED BY SAMPLES HMS-CJHS-C23-04A-C COLLECTED ON 5-1-92.	N
M	12" VINYL FLOOR TILE GRAY/WHITE) & MASTIC	5	NONE DETECTED	1,212 S	CLASSROOM 4	(13) SAMPLE HMS-CJHS-S23-05A COLLECTED ON 5-1-92.	N
S	TEXTURE (KNOCKDOWN STYLE)	147	ASSUMED POSITIVE	1,000 S	CLASSROOM 4	(1) (4)	N
M	COVE BASE ADHESIVE	160	ASSUMED POSITIVE	150 L	THROUGHOUT	(1) (4)	N

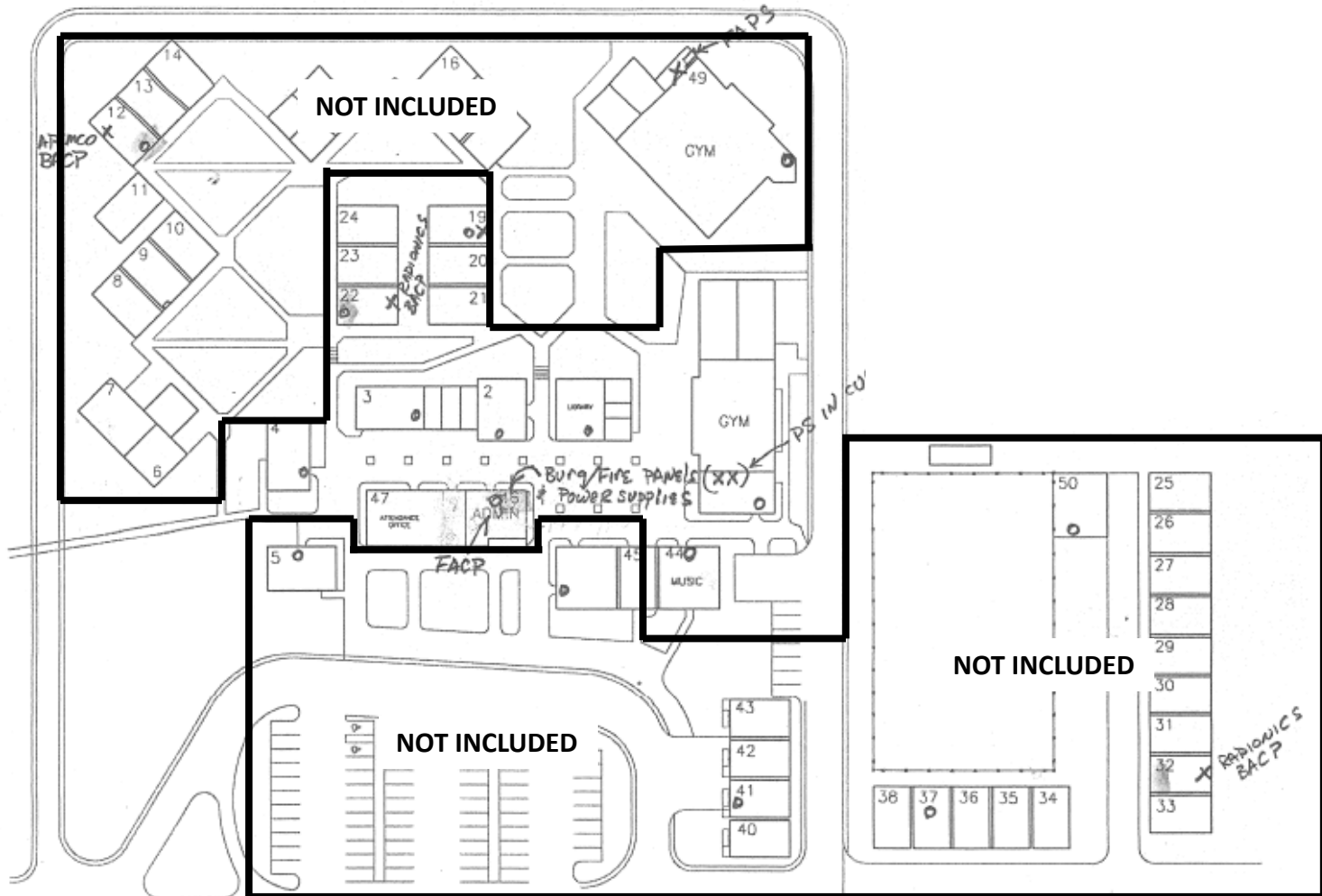
C:\Users\selbert\Entek Consulting Group, Inc\Entekgroup - Documents\Clients\Center USD\20-5551 3 Yr Reinspections\Sites\Antelope View Charter School\AVC HMR.wpd

CONDITION CODE

General Condition: (1) Good (2) Damaged (3) Significantly Damaged (25% or more)
Change in Condition: (4) No (5) Yes (If Yes, explain under comments)
Abated: (6) Repaired (7) Removed (8) Encapsulated (9) Enclosed (10) Isolated & Restricted
Miscellaneous: (11) Inaccessible, no inspection data (12) Other (Explain under comments) (13) Non-Asbestos/Not Inspected

CONSULT ORIGINAL AND SUPPLEMENTARY INSPECTION REPORTS FOR MATERIALS WITH TRACE AMOUNTS OF ASBESTOS

Antelope View Charter School – No Longer in Operation Facility is Now General District Offices



M. P.

Center Unified School District
General District Offices – FKA: Antelope View Charter
8300 Watt Avenue
Antelope, CA 95843

Entek Consulting Group, Inc.
4200 Rocklin Road, Suite 7
Rocklin, CA 95677
Map Not to Scale

Three-Year AHERA Reinspection
Conducted by Matt Reilly
On November 6, 2020
Project Number 20-5551

Center High School

RECORD OF FRIABLE AND NON-FRIABLE ACM
(FORM B)

Inspection Date November 6, 2020

THREE-YEAR REINSPECTION

SCHOOL Center High School					CDS CODE 34-73973-3430378
SCHOOL PHONE NUMBER (916) 338-6420					
ADDRESS 8306 Watt Avenue	(NUMBER)	(STREET)	(CITY) Antelope, CA	(ZIP) 95843	

-IMPORTANT-

Each building and functional space with friable ACBM or friable assumed ACBM listed on this form requires completion of **FORM C** (PHYSICAL AND HAZARD ASSESSMENT OF FRIABLE ACBM OR FRIABLE ASSUMED ACBM). Indicate location of material on blueprint, diagram or narrative in square or linear feet, and attach a copy (Sec. 763.93).

LINE	BUILDING NAME & FUNCTIONAL SPACE (Indicate Address if Different From Above)	CHECK ONE			CHECK ONE			
		SUR- FACING	TSI	MISC	ACBM		ASSUMED ACBM	
					FRIABLE	NON- FRIABLE	FRIABLE	NON- FRIABLE
1.	BAND DISTRICT MUST CERTIFY							
2.	C TRAIN CONTAINERS - (7) NO SUSPECT ACBM							
3.	CLASSROOMS 200-207 & TL DISTRICT MUST CERTIFY							
4.	CLASSROOMS 400-407 & CCC LAB DISTRICT MUST CERTIFY							
5.	CLASSROOMS 700-703 DISTRICT MUST CERTIFY							
6.	LIBRARY BUILDING DISTRICT MUST CERTIFY							
7.	THEATER DISTRICT MUST CERTIFY							
8.	PORTABLES 208-212 DISTRICT MUST CERTIFY							
9.	PORTABLES 300-306 DISTRICT MUST CERTIFY							
10.	PORTABLES 800-806 DISTRICT MUST CERTIFY							
11.	PORTABLES 900-904 DISTRICT MUST CERTIFY							
12.	PORTABLES 905-907 DISTRICT MUST CERTIFY							
13.	UNIT A - GYM			X				X
14.	UNIT B - MPR NO ACBM							
15.	UNIT C - ADMINISTRATION & COUNSELING NO ACBM							
16.	UNIT D - RESTROOMS - ATTIC INACCESSIBLE NO ACBM							

C:\Users\selbert\Entek Consulting Group, Inc\Entekgroup - Documents\Clients\Center USD\20-5551 3 Yr Reinspections\Sites\Center HS\Center Form B.wpd

See attached "Homogeneous Materials Records" for all materials and their locations by building. On Form B all buildings are listed, and a summary of all non-friable and friable material is provided. Friable materials and their locations are listed separately under each building on Form B.

RECORD OF FRIABLE AND NON-FRIABLE ACM
(FORM B)

Inspection Date November 6, 2020

THREE-YEAR REINSPECTION

					CDS CODE 34-73973-3430378	
SCHOOL Center High School					SCHOOL PHONE NUMBER (916) 338-6420	
ADDRESS 8306 Watt Avenue	(NUMBER)	(STREET)	(CITY) Antelope, CA	(ZIP) 95843		

-IMPORTANT-

Each building and functional space with friable ACBM or friable assumed ACBM listed on this form requires completion of **FORM C (PHYSICAL AND HAZARD ASSESSMENT OF FRIABLE ACBM OR FRIABLE ASSUMED ACBM)**. Indicate location of material on blueprint, diagram or narrative in square or linear feet, and attach a copy (Sec. 763.93).

LINE	BUILDING NAME & FUNCTIONAL SPACE (Indicate Address if Different From Above)	CHECK ONE			CHECK ONE			
		SUR- FACING	TSI	MISC	ACBM		ASSUMED ACBM	
					FRIABLE	NON- FRIABLE	FRIABLE	NON- FRIABLE
17.	UNIT E - CLASSROOMS 600-604 NO ACBM							
18.	UNIT F - SHOP CLASSROOMS ATTIC INACCESSIBLE NO ACBM							
19.	UNIT G - CLASSROOMS 500-504 DISTRICT CLAIMS EXEMPTION							
20.	UNIT J-2 (CLASSROOM 5) DEMOLISHED	X		X				X
21.	UNIT K - WEIGHT ROOM (CLASSROOM 807) NO SUSPECT ACBM							
22.	UNIT N - CLASSROOMS 101-109 DISTRICT CLAIMS EXEMPTION							
23.	UNIT P - (CLASSROOM 6) DISTRICT CLAIMS EXEMPTION							
24.	UNIT Q - (CLASSROOMS 7-10) DEMOLISHED	X		X				X
25.	UNIT T - (NEW GYMNASIUM) DISTRICT MUST CERTIFY							

C:\Users\selbert\Entek Consulting Group, Inc\Entekgroup - Documents\Clients\Center USD\20-5551 3 Yr Reinspections\Sites\Center HS\Center Form B.wpd

See attached "Homogeneous Materials Records" for all materials and their locations by building. On Form B all buildings are listed, and a summary of all non-friable and friable material is provided. Friable materials and their locations are listed separately under each building on Form B.

THREE-YEAR REINSPECTION HOMOGENEOUS ACBM RECORDS

Date of Inspection: November 6, 2020

District: Center Unified School District

Inspector: Matt Reilly

School: Center High School

Building: Unit A - Gym

Material Class	Material	Homo. Mat. #	% Asb.	Ft ² /L.F.	Location	Condition: Code & Comments	Friable Yes/No
M	DRYWALL & JOINT COMPOUND	1	NONE DETECTED	6,000 S	LOBBY, GYM, RESTROOMS, GIRL'S & BOY'S LOCKER ROOMS, COACHES OFFICE, SNACK BAR, TRAINING ROOM, BOILER ROOM, EQUIPMENT ROOM, JANITOR CLOSET, LAUNDRY ROOM, EQUIPMENT NEXT TO GIRL'S COACHING OFFICES, AND CORRIDORS	(13)	N
M	12" ACOUSTIC CEILING TILE	2	NONE DETECTED	11,833 S	LOBBY, GYM, AND CORRIDORS	(13)	N
M	LINOLEUM (PURPLE)	4	NONE DETECTED	150 S	GYM	(13)	N
S	PLASTER	6	NONE DETECTED	15,000 S	LOCKER ROOM & WALLS ADJOINING COACHES OFFICE, TRAINING ROOM, JANITOR CLOSET, AND BOILER ROOM	(13)	N
M	LAMINATE WOOD FLOORING	200	NONE DETECTED	1,660 S	LOBBY, SNACK BAR, AND CORRIDORS	(1)	N
M	LINOLEUM (RED)	50	ASSUMED POSITIVE	325 S	MEN'S LOBBY RESTROOM	(1) (4)	N
M	LINOLEUM (PURPLE/RED)	51	ASSUMED POSITIVE	325 S	WOMEN'S LOBBY RESTROOM	(1) (4)	N

C:\Users\selbert\Entek Consulting Group, Inc\Entekgroup - Documents\Clients\Center USD\20-5551 3 Yr Reinspections\Sites\Center HS\Center HMR.wpd

CONDITION CODE

General Condition: (1) Good (2) Damaged (3) Significantly Damaged (25% or more)

Change in Condition: (4) No (5) Yes (If Yes, explain under comments)

Abated: (6) Repaired (7) Removed (8) Encapsulated (9) Enclosed (10) Isolated & Restricted

Miscellaneous: (11) Inaccessible, no inspection data (12) Other (Explain under comments) (13) Non-Asbestos/Not Inspected

CONSULT ORIGINAL AND SUPPLEMENTARY INSPECTION REPORTS FOR MATERIALS WITH TRACE AMOUNTS OF ASBESTOS

THREE-YEAR REINSPECTION HOMOGENEOUS ACBM RECORDS

Date of Inspection: November 6, 2020

District: Center Unified School District

Inspector: Matt Reilly

School: Center High School

Building: Unit B - MPR

Material Class	Material	Homo. Mat. #	% Asb.	Ft ² /L.F.	Location	Condition: Code & Comments	Friable Yes/No
M	DRYWALL & JOINT COMPOUND	1	NONE DETECTED	10,000 S	BOY'S & GIRL'S RESTROOMS, JANITORS ROOM, MPR, SUBFLOOR, KITCHEN RESTROOM, STAGE LIGHTING CONTROL ROOM, KITCHEN DRY STORAGE ROOM, AND MUSIC ROOM	(13)	N
M	12" ACOUSTIC CEILING TILE	2	NONE DETECTED	5,950 S	MPR, STAGE, AND MUSIC ROOM	(13)	N
M	LINOLEUM (PURPLE)	4	NONE DETECTED	150 S	GIRL'S RESTROOM	(13)	N
M	LINOLEUM	5	NONE DETECTED	1,550 S	KITCHEN	(13)	N
S	PLASTER	6	NONE DETECTED	4,500 S	KITCHEN	(13)	N
M	LINOLEUM (BLUE/TAN)	7	NONE DETECTED	5,986 S	MPR AND MUSIC ROOM	(13)	N
M	LINOLEUM (BLUE)	8	NONE DETECTED	186 S	BOY'S RESTROOM, STAGE, AND KITCHEN	(13)	N

C:\Users\selbert\Entek Consulting Group, Inc\Entekgroup - Documents\Clients\Center USD\20-5551 3 Yr Reinspections\Sites\Center HS\Center HMR.wpd

CONDITION CODE

General Condition: (1) Good (2) Damaged (3) Significantly Damaged (25% or more)
Change in Condition: (4) No (5) Yes (If Yes, explain under comments)
Abated: (6) Repaired (7) Removed (8) Encapsulated (9) Enclosed (10) Isolated & Restricted
Miscellaneous: (11) Inaccessible, no inspection data (12) Other (Explain under comments) (13) Non-Asbestos/Not Inspected

CONSULT ORIGINAL AND SUPPLEMENTARY INSPECTION REPORTS FOR MATERIALS WITH TRACE AMOUNTS OF ASBESTOS

THREE-YEAR REINSPECTION HOMOGENEOUS ACBM RECORDS

Date of Inspection: November 6, 2020

District: Center Unified School District

Inspector: Matt Reilly

School: Center High School

Building: Unit C - Administration & Counseling

Material Class	Material	Homo. Mat. #	% Asb.	Ft ² /L.F.	Location	Condition: Code & Comments	Friable Yes/No
M	DRYWALL & JOINT COMPOUND	1	NONE DETECTED	7,000 S	ADMINISTRATION AND COUNSELING	(13)	N
M	12" ACOUSTIC CEILING TILE	2	NONE DETECTED	6,525 S	ADMINISTRATION AND COUNSELING	(13)	N
M	12" VINYL FLOOR TILE	3	NONE DETECTED	500 S	ADMINISTRATION AND COUNSELING	(13) COVERED WITH CARPET.	N
M	LINOLEUM (PURPLE)	4	NONE DETECTED	150 S	ADMINISTRATION	(13)	N

C:\Users\selbert\Entek Consulting Group, Inc\Entekgroup - Documents\Clients\Center USD\20-5551 3 Yr Reinspections\Sites\Center HS\Center HMR.wpd

CONDITION CODE

General Condition: (1) Good (2) Damaged (3) Significantly Damaged (25% or more)

Change in Condition: (4) No (5) Yes (If Yes, explain under comments)

Abated: (6) Repaired (7) Removed (8) Encapsulated (9) Enclosed (10) Isolated & Restricted

Miscellaneous: (11) Inaccessible, no inspection data (12) Other (Explain under comments) (13) Non-Asbestos/Not Inspected

CONSULT ORIGINAL AND SUPPLEMENTARY INSPECTION REPORTS FOR MATERIALS WITH TRACE AMOUNTS OF ASBESTOS

THREE-YEAR REINSPECTION HOMOGENEOUS ACBM RECORDS

Date of Inspection: November 6, 2020

District: Center Unified School District

Inspector: Matt Reilly

School: Center High School

Building: Unit D - Restrooms

Material Class	Material	Homo. Mat. #	% Asb.	Ft ² /L.F.	Location	Condition: Code & Comments	Friable Yes/No
M	DRYWALL & JOINT COMPOUND	1	NONE DETECTED	3,400 S	BOY'S & GIRL'S RESTROOMS AND JANITORS CLOSET	(13)	N
M	LINOLEUM (PURPLE)	4	NONE DETECTED	400 S	GIRL'S RESTROOM	(13)	N

C:\Users\selbert\Entek Consulting Group, Inc\Entekgroup - Documents\Clients\Center USD\20-5551 3 Yr Reinspections\Sites\Center HS\Center HMR.wpd

CONDITION CODE

General Condition: (1) Good (2) Damaged (3) Significantly Damaged (25% or more)
Change in Condition: (4) No (5) Yes (If Yes, explain under comments)
Abated: (6) Repaired (7) Removed (8) Encapsulated (9) Enclosed (10) Isolated & Restricted
Miscellaneous: (11) Inaccessible, no inspection data (12) Other (Explain under comments) (13) Non-Asbestos/Not Inspected

CONSULT ORIGINAL AND SUPPLEMENTARY INSPECTION REPORTS FOR MATERIALS WITH TRACE AMOUNTS OF ASBESTOS

THREE-YEAR REINSPECTION HOMOGENEOUS ACBM RECORDS

Date of Inspection: November 6, 2020

District: Center Unified School District

Inspector: Matt Reilly

School: Center High School

Building: Unit E - Classrooms 600-604

Material Class	Material	Homo. Mat. #	% Asb.	Ft ² /L.F.	Location	Condition: Code & Comments	Friable Yes/No
M	DRYWALL & JOINT COMPOUND	1	NONE DETECTED	15,000 S	HOME ECONOMICS, SCIENCE, AND ARTS/CRAFTS	(13)	N
M	12" ACOUSTIC CEILING TILE	2	NONE DETECTED	6,093 S	HOME ECONOMICS, SCIENCE, AND ARTS/CRAFTS	(13)	N
M	12" VINYL FLOOR TILE	3	NONE DETECTED	1,500 S	ARTS/CRAFTS	(13)	N
M	LINOLEUM	14	NONE DETECTED	950 S	HOME ECONOMICS	(13)	N
M	12" VINYL FLOOR TILE (TAN)	15	NONE DETECTED	2,940 S	SCIENCE	(13)	N

C:\Users\selbert\Entek Consulting Group, Inc\Entekgroup - Documents\Clients\Center USD\20-5551 3 Yr Reinspections\Sites\Center HS\Center HMR.wpd

CONDITION CODE

General Condition: (1) Good (2) Damaged (3) Significantly Damaged (25% or more)
Change in Condition: (4) No (5) Yes (If Yes, explain under comments)
Abated: (6) Repaired (7) Removed (8) Encapsulated (9) Enclosed (10) Isolated & Restricted
Miscellaneous: (11) Inaccessible, no inspection data (12) Other (Explain under comments) (13) Non-Asbestos/Not Inspected

CONSULT ORIGINAL AND SUPPLEMENTARY INSPECTION REPORTS FOR MATERIALS WITH TRACE AMOUNTS OF ASBESTOS

**THREE-YEAR REINSPECTION
HOMOGENEOUS ACBM RECORDS**

Date of Inspection: November 6, 2020

District: Center Unified School District

Inspector: Matt Reilly

School: Center High School

Building: Unit F - Shop Classrooms

Material Class	Material	Homo. Mat. #	% Asb.	Ft ² /L.F.	Location	Condition: Code & Comments	Friable Yes/No
M	DRYWALL & JOINT COMPOUND	1	NONE DETECTED	20,000 S	SHOP	(13)	N
M	12" ACOUSTIC CEILING TILE	2	NONE DETECTED	200 S	SHOP	(13)	N
M	LINOLEUM (YELLOW & ORANGE)	5	NONE DETECTED	200 S	SHOP	(13)	N

C:\Users\selbert\Entek Consulting Group, Inc\Entekgroup - Documents\Clients\Center USD\20-5551 3 Yr Reinspections\Sites\Center HS\Center HMR.wpd

CONDITION CODE

General Condition: (1) Good (2) Damaged (3) Significantly Damaged (25% or more)

Change in Condition: (4) No (5) Yes (If Yes, explain under comments)

Abated: (6) Repaired (7) Removed (8) Encapsulated (9) Enclosed (10) Isolated & Restricted

Miscellaneous: (11) Inaccessible, no inspection data (12) Other (Explain under comments) (13) Non-Asbestos/Not Inspected

CONSULT ORIGINAL AND SUPPLEMENTARY INSPECTION REPORTS FOR MATERIALS WITH TRACE AMOUNTS OF ASBESTOS

THREE-YEAR REINSPECTION HOMOGENEOUS ACBM RECORDS

Date of Inspection: November 6, 2020

District: Center Unified School District

Inspector: Matt Reilly

School: Center High School (Reassigned from Antelope View Charter School, FKA: Center Jr. High Site)

Building: Unit J2 (Classroom 5)

Material Class	Material	Homo. Mat. #	% Asb.	Ft ² /L.F.	Location	Condition: Code & Comments	Friable Yes/No
M	DRYWALL & JOINT COMPOUND	1	NONE DETECTED	2,500 S	CLASSROOM 5	(7) BUILDING DEMOLISHED	N
M	12" VINYL FLOOR TILE (GRAY/WHITE) & MASTIC	5	NONE DETECTED	600 S	CLASSROOM 5	(7) BUILDING DEMOLISHED	N
S	TEXTURE (ORANGE PEEL STYLE)	148	ASSUMED POSITIVE	2,200 S	CLASSROOM 5	(7) BUILDING DEMOLISHED	N
M	COVE BASE ADHESIVE	160	ASSUMED POSITIVE	120 L	THROUGHOUT	(7) BUILDING DEMOLISHED	N
M	CARPET ADHESIVE	161	ASSUMED POSITIVE	300 S	THROUGHOUT	(7) BUILDING DEMOLISHED	N

C:\Users\selbert\Entek Consulting Group, Inc\Entekgroup - Documents\Clients\Center USD\20-5551 3 Yr Reinspections\Sites\Center HS\Center HMR.wpd

CONDITION CODE

General Condition: (1) Good (2) Damaged (3) Significantly Damaged (25% or more)

Change in Condition: (4) No (5) Yes (If Yes, explain under comments)

Abated: (6) Repaired (7) Removed (8) Encapsulated (9) Enclosed (10) Isolated & Restricted

Miscellaneous: (11) Inaccessible, no inspection data (12) Other (Explain under comments) (13) Non-Asbestos/Not Inspected

CONSULT ORIGINAL AND SUPPLEMENTARY INSPECTION REPORTS FOR MATERIALS WITH TRACE AMOUNTS OF ASBESTOS

THREE-YEAR REINSPECTION HOMOGENEOUS ACBM RECORDS

Date of Inspection: November 6, 2020

District: Center Unified School District

Inspector: Matt Reilly

School: Center High School (Reassigned from Antelope View Charter School, FKA: Center Jr. High Site)

Building: Unit Q (Science Rooms 8-10)

Material Class	Material	Homo Mat. #	% Asb.	Ft ² /L.F.	Location	Condition: Code & Comments	Friable Yes/No
M	DRYWALL & JOINT COMPOUND	125	ASSUMED POSITIVE	8,000 S	CLASSROOMS 8-10	(7) BUILDING DEMOLISHED	N
M	12" VINYL FLOOR TILE (WHITE/GRAY) & MASTIC	133	ASSUMED POSITIVE	2,640 S	CLASSROOMS 8-10	(7) BUILDING DEMOLISHED	N
M	4" COVE BASE (BROWN) ADHESIVE	134	ASSUMED POSITIVE	360 L	CLASSROOMS 8-10	(7) BUILDING DEMOLISHED	N
M	2' X 4' CEILING PANELS (FISSURE PATTERN)	135	ASSUMED POSITIVE	2,640 S	CLASSROOMS 8-10	(7) BUILDING DEMOLISHED	N
S	TEXTURE (ORANGE PEEL STYLE)	149	ASSUMED POSITIVE	1,500 S	CLASSROOMS 8-10	(7) BUILDING DEMOLISHED	N

C:\Users\selbert\Entek Consulting Group, Inc\Entekgroup - Documents\Clients\Center USD\20-5551 3 Yr Reinspections\Sites\Center HS\Center HMR.wpd

CONDITION CODE

General Condition: (1) Good (2) Damaged (3) Significantly Damaged (25% or more)
Change in Condition: (4) No (5) Yes (If Yes, explain under comments)
Abated: (6) Repaired (7) Removed (8) Encapsulated (9) Enclosed (10) Isolated & Restricted
Miscellaneous: (11) Inaccessible, no inspection data (12) Other (Explain under comments) (13) Non-Asbestos/Not Inspected

CONSULT ORIGINAL AND SUPPLEMENTARY INSPECTION REPORTS FOR MATERIALS WITH TRACE AMOUNTS OF ASBESTOS

Center High School



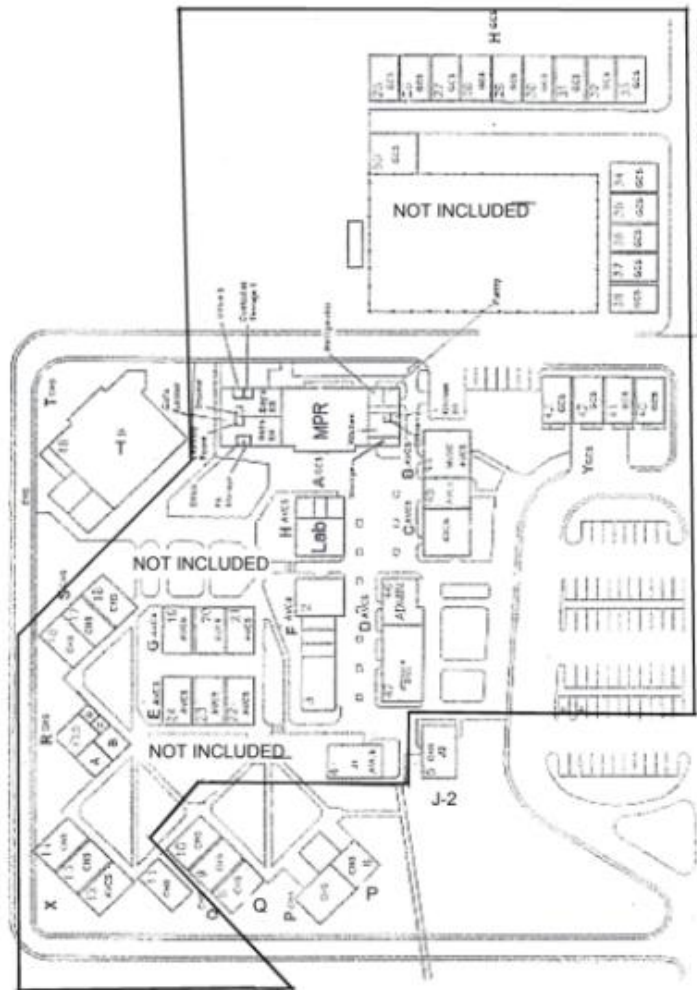
M. Reilly

Center Unified School District
Center High School
8306 Watt Avenue
Antelope, CA 95843

Entek Consulting Group, Inc.
4200 Rocklin Road, Suite 7
Rocklin, CA 95677
Map Not to Scale

Three-Year AHERA Reinspection
Conducted by Matt Reilly
On November 6, 2020
Project Number 20-5551

Center High School – Satellite Buildings



M. Reilly

Center Unified School District
Center High School
8306 Watt Avenue
Antelope, CA 95843

Entek Consulting Group, Inc.
4200 Rocklin Road, Suite 7
Rocklin, CA 95677
Map Not to Scale

Three-Year AHERA Reinspection
Conducted by Matt Reilly
On November 6, 2020
Project Number 20-5551

District Office

RECORD OF FRIABLE AND NON-FRIABLE ACM
(FORM B)

Inspection Date: November 6, 2020

THREE-YEAR REINSPECTION

SCHOOL District Facilities					CDS CODE 34-73973-0000000
ADDRESS (NUMBER) (STREET) (CITY) (ZIP) 8408 Watt Avenue Antelope, CA 95843					SCHOOL PHONE NUMBER (916) 338-6400

-IMPORTANT-

Each building and functional space with friable ACBM or friable assumed ACBM listed on this form requires completion of FORM C (PHYSICAL AND HAZARD ASSESSMENT OF FRIABLE ACBM OR FRIABLE ASSUMED ACBM). Indicate location of material on blueprint, diagram or narrative in square or linear feet, and attach a copy (Sec. 763.93).

LINE	BUILDING NAME & FUNCTIONAL SPACE (Indicate Address if Different From Above)	CHECK ONE			CHECK ONE			
		SUR- FACING	TSI	MISC	ACBM		ASSUMED ACBM	
					FRIABLE	NON- FRIABLE	FRIABLE	NON- FRIABLE
1.	UNIT A - ADMINISTRATION	X		X		X		X
2.	UNIT B - MAINTENANCE	X		X		X		X
3.	UNITS C & D - WAREHOUSE	X		X				X
4.	UNIT E - TRANSPORTATION			X				X
5.	UNIT F - M.O.T.	X		X				X
6.	UNIT G - C.S.S	X		X				X
7.	UNIT H - RESTROOMS	X		X				X
8.	UNIT I - PERSONNEL OFFICE			X				X
9.	UNIT J - PERSONNEL OFFICE			X				X
10.	UNIT K - SPECIAL EDUCATION	X		X				X
11.	UNIT L - NUTRITIONAL SERVICES			X				X
12.	UNIT M - CONFERENCE ROOM			X				X
13.	UNIT N - CONFERENCE ROOM			X				X
14.	UNIT O - INSTRUCTIONAL SERVICES			X				X
15.								
16.								
17.								

C:\Users\selbert\Entek Consulting Group, Inc\Entekgroup - Documents\Clients\Center USD\20-5551 3 Yr Reinspections\Sites\District Office\District Office Form B.wpd

See attached "Homogeneous Materials Records" for all materials and their locations by building. On Form B all buildings are listed, and a summary of all non-friable and friable material is provided. Friable materials and their locations are listed separately under each building on Form B.

THREE-YEAR REINSPECTION HOMOGENEOUS ACBM RECORDS

Date of Inspection: November 6, 2020

District: Center Unified School District

Inspector: Matt Reilly

School: District Facility (North)

Building: Unit A (Administration)

Material Class	Material	Homo Mat. #	% Asb.	Ft ² /L.F.	Location	Condition: Code & Comments	Friable Yes/No
M	SHEET VINYL FLOORING (TAN)	4	10%	300 S	MEN'S & WOMEN'S RESTROOMS	(1) (4)	N
M	12" VINYL FLOOR TILE (WHITE) & MASTIC	5	2%	64 S	TELEPHONE ROOM	(1) (4)	N
M	DRYWALL & JOINT COMPOUND	6	NONE DETECTED	5,520 S	MAIN, OFFICES 1-6, KITCHEN, CLOSETS 1 & 2, WOMEN'S & MEN'S RESTROOMS, BUSINESS 1 & 2, PAPER STORAGE, HALLS 1 & 2, AND TELEPHONE ROOM	(13) SAMPLES HMS-DO-S23-06A-C COLLECTED ON 5-7-92.	N
M	DUCT SEAM TAPE	7	NONE DETECTED	80 L	FURNACE ROOM	(13)	N
M	2' X 4' CEILING PANEL (FISSURE PATTERN)	107	ASSUMED POSITIVE	240 S	OFFICE 3	(1) (4) FIBERGLASS	N
M	4" COVE BASE (LIGHT BLUE) ADHESIVE	111	ASSUMED POSITIVE	50 L	KITCHEN	(1) (4)	N
M	SHEET VINYL FLOORING (WHITE)	112	ASSUMED POSITIVE	150 S	KITCHEN	(1) (4)	N
M	SHEET VINYL FLOORING (GRAY/BLUE)	113	ASSUMED POSITIVE	80 S	PAPER STORAGE	(1) (4)	N

C:\Users\selbert\Entek Consulting Group, Inc\Entekgroup - Documents\Clients\Center USD\20-5551 3 Yr Reinspections\Sites\District Office\District Office HMR.wpd
CONDITION CODE

General Condition: (1) Good (2) Damaged (3) Significantly Damaged (25% or more)

Change in Condition: (4) No (5) Yes (If Yes, explain under comments)

Abated: (6) Repaired (7) Removed (8) Encapsulated (9) Enclosed (10) Isolated & Restricted

Miscellaneous: (11) Inaccessible, no inspection data (12) Other (Explain under comments) (13) Non-Asbestos/Not Inspected

CONSULT ORIGINAL AND SUPPLEMENTARY INSPECTION REPORTS FOR MATERIALS WITH TRACE AMOUNTS OF ASBESTOS

THREE-YEAR REINSPECTION HOMOGENEOUS ACBM RECORDS

Date of Inspection: November 6, 2020

District: Center Unified School District

Inspector: Matt Reilly

School: District Facility (North)

Building: Unit A, Administration
(Continued)

Material Class	Material	Homo Mat. #	% Asb.	Ft ² /L.F.	Location	Condition: Code & Comments	Friable Yes/No
M	6" COVE BASE (GRAY) ADHESIVE	114	ASSUMED POSITIVE	140 L	PAPER STORAGE	(1) (4)	N
M	12" VINYL FLOOR TILE (LIGHT BLUE) & MASTIC	115	ASSUMED POSITIVE	50 S	TELEPHONE EQUIPMENT ROOM	(1) (4)	N
M	4" COVE BASE (BLACK) ADHESIVE	116	ASSUMED POSITIVE	30 L	TELEPHONE EQUIPMENT ROOM	(1) (4)	N
S	DRYWALL TEXTURE (KNOCKDOWN STYLE)	138	ASSUMED POSITIVE	5,520 S	MAIN, OFFICES 1-6, KITCHEN, CLOSETS 1 & 2, WOMEN'S & MEN'S RESTROOMS, BUSINESS 1 & 2, PAPER STORAGE, HALLS 1 & 2, AND TELEPHONE ROOM	(1) (4)	N
M	4" COVE BASE (BLUE) ADHESIVE	145	ASSUMED POSITIVE	200 L	MAIN, OFFICES 1-6, CLOSETS 1 & 2, BUSINESS 1 & 2, AND HALLS 1 & 2	(1) (4)	N
M	CARPET ADHESIVE	150	ASSUMED POSITIVE	1,500 S	VARIOUS LOCATIONS THROUGHOUT	(1) (4)	N

C:\Users\selbert\Entek Consulting Group, Inc\Entekgroup - Documents\Clients\Center USD\20-5551 3 Yr Reinspections\Sites\District Office\District Office HMR.wpd

CONDITION CODE

General Condition: (1) Good (2) Damaged (3) Significantly Damaged (25% or more)
Change in Condition: (4) No (5) Yes (If Yes, explain under comments)
Abated: (6) Repaired (7) Removed (8) Encapsulated (9) Enclosed (10) Isolated & Restricted
Miscellaneous: (11) Inaccessible, no inspection data (12) Other (Explain under comments) (13) Non-Asbestos/Not Inspected

CONSULT ORIGINAL AND SUPPLEMENTARY INSPECTION REPORTS FOR MATERIALS WITH TRACE AMOUNTS OF ASBESTOS

THREE-YEAR REINSPECTION HOMOGENEOUS ACBM RECORDS

Date of Inspection: November 6, 2020

District: Center Unified School District

Inspector: Matt Reilly

School: District Facility (North)

Building: Unit B (Maintenance)

Material Class	Material	Homo Mat. #	% Asb.	Ft ² /L.F.	Location	Condition: Code & Comments	Friable Yes/No
M	DRYWALL & JOINT COMPOUND	1	NONE DETECTED	4,400 S	BREAKROOM, GARAGE/SHOP, LOFT/STORAGE, MAINTENANCE OFFICE, RESTROOM, STORAGE 2, AND OFFICE 2	(13) SAMPLES HMS-DO-S23-01A-C COLLECTED ON 5-7-92.	N
M	9" VINYL FLOOR TILE (TAN) & MASTIC	2	10%	50 S	MAINTENANCE OFFICE 2	(1) (4)	N
M	12" VINYL FLOOR TILE (GRAY/ BROWN) & MASTIC	3	3%	30 S	RESTROOM	(1) (4)	N
M	6" COVE BASE (BROWN) ADHESIVE	117	ASSUMED POSITIVE	20 L	RESTROOM	(1) (4)	N
M	12" VINYL FLOOR TILE (WHITE/GRAY) & MASTIC	118	ASSUMED POSITIVE	300 S	BREAK ROOM	(1) (4)	N
M	4" COVE BASE (BLUE) ADHESIVE	119	ASSUMED POSITIVE	56 L	BREAK ROOM	(1) (4)	N
S	DRYWALL TEXTURE (STIPPLED STYLE)	139	ASSUMED POSITIVE	680 S	MAINTENANCE OFFICE	(1) (4)	N
S	DRYWALL TEXTURE (KNOCKDOWN STYLE)	140	ASSUMED POSITIVE	750 S	BREAK ROOM	(1) (4)	N

C:\Users\selbert\Entek Consulting Group, Inc\Entekgroup - Documents\Clients\Center USD\20-5551 3 Yr Reinspections\Sites\District Office\District Office HMR.wpd

CONDITION CODE

General Condition: (1) Good (2) Damaged (3) Significantly Damaged (25% or more)
Change in Condition: (4) No (5) Yes (If Yes, explain under comments)
Abated: (6) Repaired (7) Removed (8) Encapsulated (9) Enclosed (10) Isolated & Restricted
Miscellaneous: (11) Inaccessible, no inspection data (12) Other (Explain under comments) (13) Non-Asbestos/Not Inspected

CONSULT ORIGINAL AND SUPPLEMENTARY INSPECTION REPORTS FOR MATERIALS WITH TRACE AMOUNTS OF ASBESTOS

THREE-YEAR REINSPECTION HOMOGENEOUS ACBM RECORDS

Date of Inspection: November 6, 2020

District: Center Unified School District

Inspector: Matt Reilly

School: District Facility (North)

Building: Units C & D (Warehouse)

Material Class	Material	Homo Mat. #	% Asb.	Ft ² /L.F.	Location	Condition: Code & Comments	Friable Yes/No
M	DRYWALL & JOINT COMPOUND	108	ASSUMED POSITIVE	1,000 S	OFFICES 1 & 2	(1) (4)	N
M	4" COVE BASE GRAY	120	ASSUMED POSITIVE	100 L	OFFICES 1 & 2	(1) (4)	N
M	SHEET VINYL FLOORING (GRAY)	121	ASSUMED POSITIVE	250 S	OFFICE 1	(2) (5) WATER DAMAGE AT EXTERIOR ENTRY DOOR, FLOOR CRACKING AND SWELLING	N
M	4" COVE BASE (BLACK) ADHESIVE	122	ASSUMED POSITIVE	120 L	DUPLICATING ROOM	(1) (4)	N
S	DRYWALL TEXTURE (KNOCKDOWN STYLE)	141	ASSUMED POSITIVE	1,000 S	OFFICES 1 & 2	(1) (4)	N
S	DRYWALL TEXTURE (KNOCKDOWN STYLE)	142	ASSUMED POSITIVE	1,000 S	DUPLICATING ROOM	(1) (4)	N
M	DRYWALL & JOINT COMPOUND	144	ASSUMED POSITIVE	1,000 S	DUPLICATING ROOM	(1) (4)	N

C:\Users\selbert\Entek Consulting Group, Inc\Entekgroup - Documents\Clients\Center USD\20-5551 3 Yr Reinspections\Sites\District Office\District Office HMR.wpd

CONDITION CODE

General Condition: (1) Good (2) Damaged (3) Significantly Damaged (25% or more)
Change in Condition: (4) No (5) Yes (If Yes, explain under comments)
Abated: (6) Repaired (7) Removed (8) Encapsulated (9) Enclosed (10) Isolated & Restricted
Miscellaneous: (11) Inaccessible, no inspection data (12) Other (Explain under comments) (13) Non-Asbestos/Not Inspected

CONSULT ORIGINAL AND SUPPLEMENTARY INSPECTION REPORTS FOR MATERIALS WITH TRACE AMOUNTS OF ASBESTOS

THREE-YEAR REINSPECTION HOMOGENEOUS ACBM RECORDS

Date of Inspection: November 6, 2020

District: Center Unified School District

Inspector: Matt Reilly

School: District Facility (North)

Building: Unit E (Transportation)

Material Class	Material	Homo Mat. #	% Asb.	Ft ² /L.F.	Location	Condition: Code & Comments	Friable Yes/No
M	12" VINYL FLOOR TILE (OFF-WHITE) & MASTIC	11	NONE DETECTED	700 S	LOUNGE/OFFICES AND 2 RESTROOMS	(13) SAMPLES HMS-DO-S23-11A & B COLLECTED ON 5-7-92.	N
M	DRYWALL & JOINT COMPOUND	12	NONE DETECTED	2,100 S	LOUNGE RESTROOM, LOUNGE/OFFICES, AND TRANSPORTATION SHOP	(13) SAMPLES HMS-DO-S23-12A-C COLLECTED ON 5-7-92.	N
M	SHEET VINYL FLOORING	13	NONE DETECTED	80 S	LOUNGE RESTROOM	(13)	N
M	CARPET ADHESIVE	150	ASSUMED POSITIVE	200 S	OFFICES	(1) (4)	N
S	DRYWALL TEXTURE (KNOCKDOWN STYLE)	151	ASSUMED POSITIVE	600 S	LOUNGE	(1) (4)	N

C:\Users\selbert\Entek Consulting Group, Inc\Entekgroup - Documents\Clients\Center USD\20-5551 3 Yr Reinspections\Sites\District Office\District Office HMR.wpd

CONDITION CODE

General Condition: (1) Good (2) Damaged (3) Significantly Damaged (25% or more)
Change in Condition: (4) No (5) Yes (If Yes, explain under comments)
Abated: (6) Repaired (7) Removed (8) Encapsulated (9) Enclosed (10) Isolated & Restricted
Miscellaneous: (11) Inaccessible, no inspection data (12) Other (Explain under comments) (13) Non-Asbestos/Not Inspected

CONSULT ORIGINAL AND SUPPLEMENTARY INSPECTION REPORTS FOR MATERIALS WITH TRACE AMOUNTS OF ASBESTOS

THREE-YEAR REINSPECTION HOMOGENEOUS ACBM RECORDS

Date of Inspection: November 6, 2020

District: Center Unified School District

Inspector: Matt Reilly

School: District Facility (North)

Building: Unit F (M.O.T.)

Material Class	Material	Homo. Mat. #	% Asb.	Ft ² /L.F.	Location	Condition: Code & Comments	Friable Yes/No
M	DRYWALL JOINT COMPOUND	104	ASSUMED POSITIVE	1,000 S	ENTRY, KITCHEN, RESTROOM, AND OFFICES 1 & 2	(1) (4)	N
M	2' X 4' CEILING PANELS (FISSURE PATTERN)	105	ASSUMED POSITIVE	1,000 S	ENTRY, KITCHEN, RESTROOM, AND OFFICES 1 & 2	(1) (4)	N
M	SHEET VINYL FLOORING (GREEN)	106	ASSUMED POSITIVE	860 S	ENTRY, KITCHEN, RESTROOM, AND OFFICES 1 & 2	(1) (4)	N
M	4" COVE BASE (GRAY) ADHESIVE	123	ASSUMED POSITIVE	80 L	ENTRY AND KITCHEN	(1) (4)	N
M	4" COVE BASE (BLUE) ADHESIVE	124	ASSUMED POSITIVE	80 L	OFFICES 1 & 2	(1) (4)	N
S	DRYWALL TEXTURE (HEAVY STIPPLE PATTERN)	143	ASSUMED POSITIVE	1,000 S	ENTRY, KITCHEN, RESTROOM, AND OFFICES 1 & 2	(1) (4)	N

C:\Users\selbert\Entek Consulting Group, Inc\Entekgroup - Documents\Clients\Center USD\20-5551 3 Yr Reinspections\Sites\District Office\District Office HMR.wpd

CONDITION CODE

General Condition: (1) Good (2) Damaged (3) Significantly Damaged (25% or more)
Change in Condition: (4) No (5) Yes (If Yes, explain under comments)
Abated: (6) Repaired (7) Removed (8) Encapsulated (9) Enclosed (10) Isolated & Restricted
Miscellaneous: (11) Inaccessible, no inspection data (12) Other (Explain under comments) (13) Non-Asbestos/Not Inspected

CONSULT ORIGINAL AND SUPPLEMENTARY INSPECTION REPORTS FOR MATERIALS WITH TRACE AMOUNTS OF ASBESTOS

THREE-YEAR REINSPECTION HOMOGENEOUS ACBM RECORDS

Date of Inspection: November 6, 2020

District: Center Unified School District

Inspector: Matt Reilly

School: District Facility (North)

Building: Unit G (C.S.S.)

Material Class	Material	Homo. Mat. #	% Asb.	Ft ² /L.F.	Location	Condition: Code & Comments	Friable Yes/No
M	DRYWALL & JOINT COMPOUND	104	ASSUMED POSITIVE	1,000 S	OFFICES 3 & 4, ENTRY 2, AND RESTRICTED ROOM	(1) (4)	N
M	2' X 4' CEILING PANELS (FISSURE PATTERN)	105	ASSUMED POSITIVE	920 S	OFFICES 3 & 4, ENTRY 2, AND RESTRICTED ROOM	(1) (4)	N
M	4" COVE BASE (GRAY) ADHESIVE	123	ASSUMED POSITIVE	150 L	ENTRY 2, OFFICES 3 & 4, AND RESTRICTED ROOM	(1) (4)	N
S	DRYWALL TEXTURE (KNOCKDOWN STYLE)	133	ASSUMED POSITIVE	1,000 S	OFFICES 3 & 4, ENTRY 2, AND RESTRICTED ROOM	(1) (4)	N
M	CARPET ADHESIVE	150	ASSUMED POSITIVE	900 S	THROUGHOUT	(1) (4)	N

C:\Users\selbert\Entek Consulting Group, Inc\Entekgroup - Documents\Clients\Center USD\20-5551 3 Yr Reinspections\Sites\District Office\District Office HMR.wpd

CONDITION CODE

General Condition: (1) Good (2) Damaged (3) Significantly Damaged (25% or more)
Change in Condition: (4) No (5) Yes (If Yes, explain under comments)
Abated: (6) Repaired (7) Removed (8) Encapsulated (9) Enclosed (10) Isolated & Restricted
Miscellaneous: (11) Inaccessible, no inspection data (12) Other (Explain under comments) (13) Non-Asbestos/Not Inspected

CONSULT ORIGINAL AND SUPPLEMENTARY INSPECTION REPORTS FOR MATERIALS WITH TRACE AMOUNTS OF ASBESTOS

THREE-YEAR REINSPECTION HOMOGENEOUS ACBM RECORDS

Date of Inspection: November 6, 2020

District: Center Unified School District

Inspector: Matt Reilly

School: District Facility (South)

Building: Unit H (Restrooms)

Material Class	Material	Homo. Mat. #	% Asb.	Ft ² /L.F.	Location	Condition: Code & Comments	Friable Yes/No
M	SHEET VINYL FLOORING (TAN)	1	ASSUMED POSITIVE	360 S	ALL ROOMS	(1) (4) CUSTODIAL ROOM IS PATCHED WITH 12" VINYL FLOOR TILE (BLUE). (11) MULTI-USE AND BOY'S & GIRL'S RESTROOMS ARE COVERED WITH LINOLEUM (BLACK/GRAY) AND LINOLEUM (GRAY/CREAM).	N
M	DRYWALL & JOINT COMPOUND	2	ASSUMED POSITIVE	360 S	ALL ROOMS	(1) (4) (11) UNFINISHED DRYWALL IS ASSUMED TO EXIST BEHIND TAGBOARD WALLS.	N
S	DRYWALL TEXTURE (ORANGE PEEL STYLE)	135	ASSUMED POSITIVE	360 S	ALL ROOMS	(1) (4)	N
M	SHEET VINYL FLOORING (BLACK/GRAY)	136	ASSUMED POSITIVE	40 S	MULTI-USE RESTROOM	(1) (4)	N
M	SHEET VINYL FLOORING (GRAY/CREAM)	137	ASSUMED POSITIVE	160 S	BOY'S AND GIRL'S RESTROOMS AND CUSTODIAN ROOM	(1) (4)	N

C:\Users\selbert\Entek Consulting Group, Inc\Entekgroup - Documents\Clients\Center USD\20-5551 3 Yr Reinspections\Sites\District Office\District Office HMR.wpd

CONDITION CODE

General Condition: (1) Good (2) Damaged (3) Significantly Damaged (25% or more)

Change in Condition: (4) No (5) Yes (If Yes, explain under comments)

Abated: (6) Repaired (7) Removed (8) Encapsulated (9) Enclosed (10) Isolated & Restricted

Miscellaneous: (11) Inaccessible, no inspection data (12) Other (Explain under comments) (13) Non-Asbestos/Not Inspected

CONSULT ORIGINAL AND SUPPLEMENTARY INSPECTION REPORTS FOR MATERIALS WITH TRACE AMOUNTS OF ASBESTOS

THREE-YEAR REINSPECTION HOMOGENEOUS ACBM RECORDS

Date of Inspection: November 6, 2020

District: Center Unified School District

Inspector: Matt Reilly

School: District Facility (South)

Building: Unit I (Personnel Office)

Material Class	Material	Homo Mat. #	% Asb.	Ft ² /L.F.	Location	Condition: Code & Comments	Friable Yes/No
M	DRYWALL & JOINT COMPOUND	3	ASSUMED POSITIVE	2,000 S	PERSONNEL OFFICE	(11) DRYWALL ASSUMED TO EXIST BEHIND ALL WALL SURFACES.	N
M	12" VINYL FLOOR TILE (WHITE/GRAY/PURPLE) & MASTIC	125	ASSUMED POSITIVE	10 S	PERSONNEL OFFICE	(1) (4)	N
M	4" COVE BASE (BROWN) ADHESIVE	126	ASSUMED POSITIVE	120 L	PERSONNEL OFFICE	(1) (4)	N
M	CARPET ADHESIVE	150	ASSUMED POSITIVE	900 S	PERSONNEL OFFICE	(1) (4)	N
M	2' X 4' CEILING PANELS	N/A	NOT SUSPECT	960 S	PERSONNEL OFFICE	(13) VINYL COATED FIBERGLASS PANELS	N

C:\Users\seibert\Entek Consulting Group, Inc\Entekgroup - Documents\Clients\Center USD\20-5551 3 Yr Reinspections\Sites\District Office\District Office HMR.wpd

CONDITION CODE

General Condition: (1) Good (2) Damaged (3) Significantly Damaged (25% or more)
Change in Condition: (4) No (5) Yes (If Yes, explain under comments)
Abated: (6) Repaired (7) Removed (8) Encapsulated (9) Enclosed (10) Isolated & Restricted
Miscellaneous: (11) Inaccessible, no inspection data (12) Other (Explain under comments) (13) Non-Asbestos/Not Inspected

CONSULT ORIGINAL AND SUPPLEMENTARY INSPECTION REPORTS FOR MATERIALS WITH TRACE AMOUNTS OF ASBESTOS

THREE-YEAR REINSPECTION HOMOGENEOUS ACBM RECORDS

Date of Inspection: November 6, 2020

District: Center Unified School District

Inspector: Matt Reilly

School: District Facility (South)

Building: Unit J (Personnel Office)

Material Class	Material	Homo Mat. #	% Asb.	Ft ² /L.F.	Location	Condition: Code & Comments	Friable Yes/No
M	DRYWALL	3	ASSUMED POSITIVE	2,000 S	PERSONNEL OFFICE	(11) UNFINISHED DRYWALL IS ASSUMED TO EXIST BEHIND TAGBOARD WALLS	N
M	12" VINYL FLOOR TILE (WHITE/GRAY/PURPLE) & MASTIC	125	ASSUMED POSITIVE	20 S	PERSONNEL OFFICE	(1) (4)	N
M	4" COVE BASE (BROWN) ADHESIVE	134	ASSUMED POSITIVE	120 L	PERSONNEL OFFICE	(1) (4)	N
M	2' X 4' CEILING PANELS	N/A	NOT SUSPECT	900 S	THROUGHOUT	(13) VINYL COATED FIBERGLASS	N

C:\Users\selbert\Entek Consulting Group, Inc\Entekgroup - Documents\Clients\Center USD\20-5551 3 Yr Reinspections\Sites\District Office\District Office HMR.wpd

CONDITION CODE

General Condition: (1) Good (2) Damaged (3) Significantly Damaged (25% or more)
Change in Condition: (4) No (5) Yes (If Yes, explain under comments)
Abated: (6) Repaired (7) Removed (8) Encapsulated (9) Enclosed (10) Isolated & Restricted
Miscellaneous: (11) Inaccessible, no inspection data (12) Other (Explain under comments) (13) Non-Asbestos/Not Inspected

CONSULT ORIGINAL AND SUPPLEMENTARY INSPECTION REPORTS FOR MATERIALS WITH TRACE AMOUNTS OF ASBESTOS

THREE YEAR REINSPECTION HOMOGENEOUS ACBM RECORDS

Date of Inspection: November 6, 2020

District: Center Unified School District

Inspector: Matt Reilly

School: District Facility (South)

Building: Unit K (Special Education)

Material Class	Material	Homo Mat. #	% Asb.	Ft ² /L.F.	Location	Condition: Code & Comments	Friable Yes/No
M	DRYWALL	3	ASSUMED POSITIVE	2,000 S	CLASSROOM	(11) UNFINISHED DRYWALL IS ASSUMED TO EXIST BEHIND TAGBOARD WALLS	N
M	2' X 4' CEILING PANELS (FISSURE PATTERN)	4	NONE DETECTED	960 S	CLASSROOM	(13) FIBERGLASS	N
M	4" COVE BASE (BLUE) ADHESIVE	145	ASSUMED POSITIVE	150 L	CLASSROOM	(1) (4)	N
S	DRYWALL TEXTURE (ORANGE PEEL STYLE)	132	ASSUMED POSITIVE	600 S	OFFICE	(1) (4) LOCATED ON TWO WALLS	N

C:\Users\selbert\Entek Consulting Group, Inc\Entekgroup - Documents\Clients\Center USD\20-5551 3 Yr Reinspections\Sites\District Office\District Office HMR.wpd

CONDITION CODE

General Condition: (1) Good (2) Damaged (3) Significantly Damaged (25% or more)
Change in Condition: (4) No (5) Yes (If Yes, explain under comments)
Abated: (6) Repaired (7) Removed (8) Encapsulated (9) Enclosed (10) Isolated & Restricted
Miscellaneous: (11) Inaccessible, no inspection data (12) Other (Explain under comments) (13) Non-Asbestos/Not Inspected

CONSULT ORIGINAL AND SUPPLEMENTARY INSPECTION REPORTS FOR MATERIALS WITH TRACE AMOUNTS OF ASBESTOS

THREE-YEAR REINSPECTION HOMOGENEOUS ACBM RECORDS

Date of Inspection: November 6, 2020

District: Center Unified School District

Inspector: Matt Reilly

School: District Facility (South)

Building: Unit L (Nutritional Services)

Material Class	Material	Homo Mat. #	% Asb.	Ft ² /L.F.	Location	Condition: Code & Comments	Friable Yes/No
M	DRYWALL	3	ASSUMED POSITIVE	2,000 S	OFFICES	(11) UNFINISHED DRYWALL IS ASSUMED TO EXIST BEHIND TAGBOARD WALLS	N
M	4" COVE BASE (BROWN) ADHESIVE	128	ASSUMED POSITIVE	150 L	OFFICES	(1) (4)	N
M	CARPET ADHESIVE	150	ASSUMED POSITIVE	900 S	THROUGHOUT	(1) (4)	N
M	2'X4' CEILING PANELS	N/A	NOT SUSPECT	900 S	THROUGHOUT	(13) VINYL COATED FIBERGLASS PANELS	N

C:\Users\selbert\Entek Consulting Group, Inc\Entekgroup - Documents\Clients\Center USD\20-5551 3 Yr Reinspections\Sites\District Office\District Office HMR.wpd

CONDITION CODE

General Condition: (1) Good (2) Damaged (3) Significantly Damaged (25% or more)
Change in Condition: (4) No (5) Yes (If Yes, explain under comments)
Abated: (6) Repaired (7) Removed (8) Encapsulated (9) Enclosed (10) Isolated & Restricted
Miscellaneous: (11) Inaccessible, no inspection data (12) Other (Explain under comments) (13) Non-Asbestos/Not Inspected

CONSULT ORIGINAL AND SUPPLEMENTARY INSPECTION REPORTS FOR MATERIALS WITH TRACE AMOUNTS OF ASBESTOS

THREE-YEAR REINSPECTION HOMOGENEOUS ACM RECORDS

Date of Inspection: November 6, 2020

District: Center Unified School District

Inspector: Matt Reilly

School: District Facility (South)

Building: Unit M (Conference Room)

Material Class	Material	Homo. Mat. #	% Asb.	Ft ² /L.F.	Location	Condition: Code & Comments	Friable Yes/No
M	DRYWALL	3	ASSUMED POSITIVE	2,000 S	THROUGHOUT	(11) UNFINISHED DRYWALL IS ASSUMED TO EXIST BEHIND TAGBOARD WALLS	N
M	4" COVE BASE BLUE	129	ASSUMED POSITIVE	120 L	THROUGHOUT	(1) (4)	N
M	CARPET ADHESIVE	150	ASSUMED POSITIVE	900 S	THROUGHOUT	(1) (4)	N
M	2'X4' CEILING PANELS	N/A	NOT SUSPECT	900 S	THROUGHOUT	(13) VINYL COATED FIBERGLASS PANELS	N

C:\Users\selbert\Entek Consulting Group, Inc\Entekgroup - Documents\Clients\Center USD\20-5551 3 Yr Reinspections\Sites\District Office\District Office HMR.wpd

CONDITION CODE

General Condition: (1) Good (2) Damaged (3) Significantly Damaged (25% or more)
Change in Condition: (4) No (5) Yes (If Yes, explain under comments)
Abated: (6) Repaired (7) Removed (8) Encapsulated (9) Enclosed (10) Isolated & Restricted
Miscellaneous: (11) Inaccessible, no inspection data (12) Other (Explain under comments) (13) Non-Asbestos/Not Inspected

CONSULT ORIGINAL AND SUPPLEMENTARY INSPECTION REPORTS FOR MATERIALS WITH TRACE AMOUNTS OF ASBESTOS

THREE-YEAR REINSPECTION HOMOGENEOUS ACM RECORDS

Date of Inspection: November 6, 2020

District: Center Unified School District

Inspector: Matt Reilly

School: District Facility (South)

Building: Unit N (Conference Room)

Material Class	Material	Homo. Mat. #	% Asb.	Ft ² /L.F.	Location	Condition: Code & Comments	Friable Yes/No
M	DRYWALL	10	ASSUMED POSITIVE	2,000 S	THROUGHOUT	(11) UNFINISHED DRYWALL IS ASSUMED TO EXIST BEHIND TAGBOARD WALLS	N
M	4" COVE BASE BLUE	130	ASSUMED POSITIVE	120 L	THROUGHOUT	(1) (4)	N
M	CARPET ADHESIVE	150	ASSUMED POSITIVE	900 S	THROUGHOUT	(1) (4)	N
M	2'X4' CEILING PANELS	N/A	NOT SUSPECT	900 S	THROUGHOUT	(13) VINYL COATED FIBERGLASS PANELS	N

C:\Users\selbert\Entek Consulting Group, Inc\Entekgroup - Documents\Clients\Center USD\20-5551 3 Yr Reinspections\Sites\District Office\District Office HMR.wpd

CONDITION CODE

General Condition: (1) Good (2) Damaged (3) Significantly Damaged (25% or more)
Change in Condition: (4) No (5) Yes (If Yes, explain under comments)
Abated: (6) Repaired (7) Removed (8) Encapsulated (9) Enclosed (10) Isolated & Restricted
Miscellaneous: (11) Inaccessible, no inspection data (12) Other (Explain under comments) (13) Non-Asbestos/Not Inspected

CONSULT ORIGINAL AND SUPPLEMENTARY INSPECTION REPORTS FOR MATERIALS WITH TRACE AMOUNTS OF ASBESTOS

THREE-YEAR REINSPECTION HOMOGENEOUS ACBM RECORDS

Date of Inspection: November 6, 2020

District: Center Unified School District

Inspector: Matt Reilly

School: District Facility (South)

Building: Unit O (Instructional Services)

Material Class	Material	Homo. Mat. #	% Asb.	Ft ² /L.F.	Location	Condition: Code & Comments	Friable Yes/No
M	DRYWALL	10	ASSUMED POSITIVE	2,000 S	THROUGHOUT	(11) UNFINISHED DRYWALL IS ASSUMED TO EXIST BEHIND TAGBOARD WALLS	N
M	4" COVE BASE (GREEN)	131	ASSUMED POSITIVE	120 L	THROUGHOUT	(1) (4)	N
M	CARPET ADHESIVE	150	ASSUMED POSITIVE	900 S	THROUGHOUT	(1) (4)	N
M	2'X4' CEILING PANELS	N/A	NOT SUSPECT	900 S	THROUGHOUT	(13) VINYL COATED FIBERGLASS PANELS	N/A

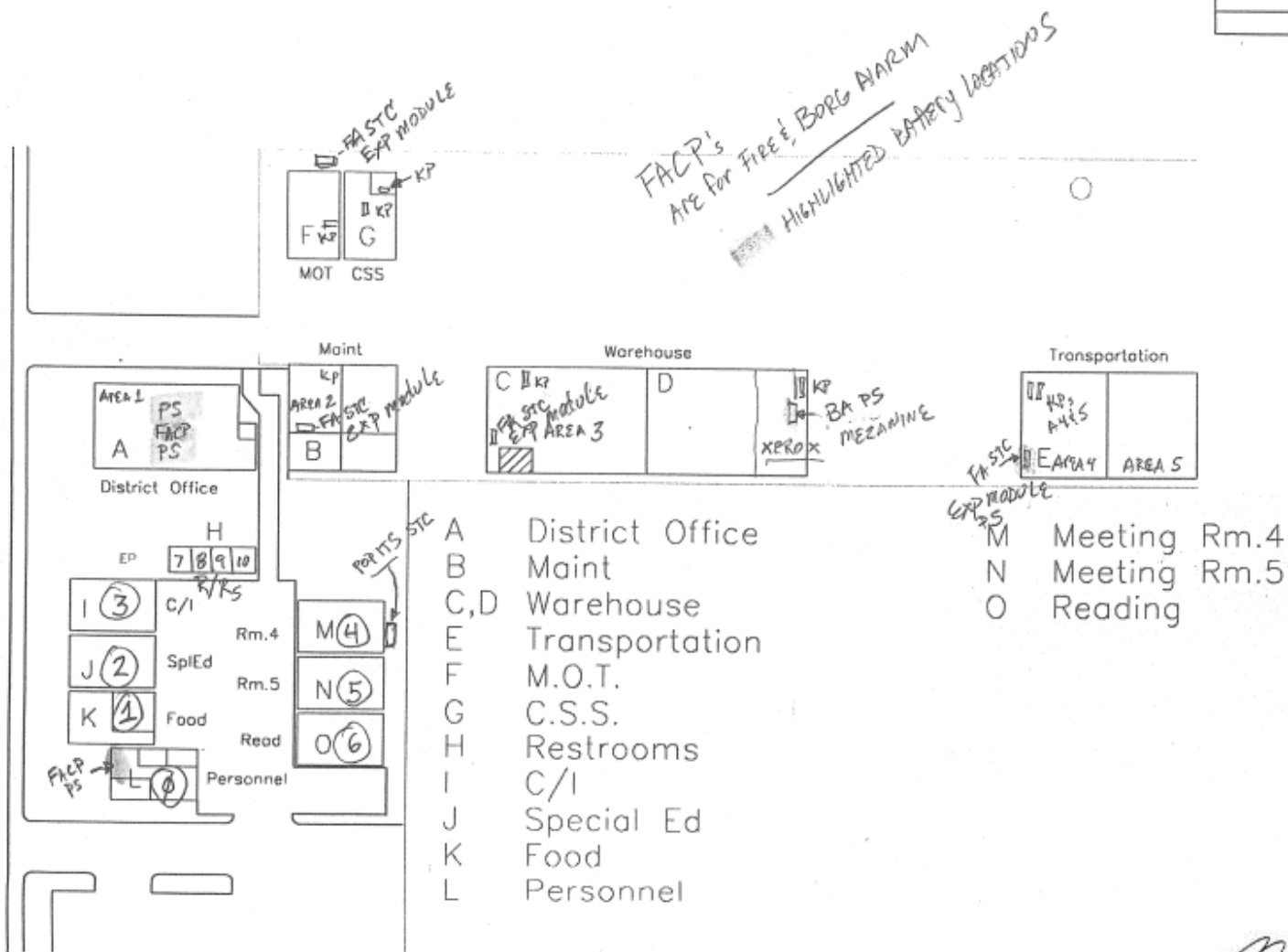
C:\Users\selbert\Entek Consulting Group, Inc\Entekgroup - Documents\Clients\Center USD\20-5551 3 Yr Reinspections\Sites\District Office\District Office HMR.wpd

CONDITION CODE

General Condition: (1) Good (2) Damaged (3) Significantly Damaged (25% or more)
Change in Condition: (4) No (5) Yes (If Yes, explain under comments)
Abated: (6) Repaired (7) Removed (8) Encapsulated (9) Enclosed (10) Isolated & Restricted
Miscellaneous: (11) Inaccessible, no inspection data (12) Other (Explain under comments) (13) Non-Asbestos/Not Inspected

CONSULT ORIGINAL AND SUPPLEMENTARY INSPECTION REPORTS FOR MATERIALS WITH TRACE AMOUNTS OF ASBESTOS

District Office



Entek Consulting Group, Inc.
4200 Rocklin Road, Suite 7
Rocklin, CA 95677
Map Not to Scale

Three-Year AHERA Reinspection
Conducted by Matt Reilly
On November 6, 2020
Project Number 20-5551

Dudley (Arthur) Elementary School

RECORD OF FRIABLE AND NON-FRIABLE ACM
(FORM B)

Inspection Date: November 6, 2020

THREE-YEAR REINSPECTION

SCHOOL Dudley (Arthur S.) Elementary School					CDS CODE 34-73973-6032908	
ADDRESS (NUMBER) (STREET) (CITY) (ZIP) 8000 Aztec Way Antelope, CA 95843					SCHOOL PHONE NUMBER (916) 338-6470	

-IMPORTANT-

Each building and functional space with friable ACM or friable assumed ACM listed on this form requires completion of **FORM C** (PHYSICAL AND HAZARD ASSESSMENT OF FRIABLE ACM OR FRIABLE ASSUMED ACM). Indicate location of material on blueprint, diagram or narrative in square or linear feet, and attach a copy (Sec. 763.93).

LINE	BUILDING NAME & FUNCTIONAL SPACE (Indicate Address if Different From Above)	CHECK ONE			CHECK ONE			
		SUR- FACING	TSI	MISC	ACBM		ASSUMED ACM	
					FRIABLE	NON-FRIABLE	FRIABLE	NON-FRIABLE
1.	CAFETERIA/MP			X		X		X
2.	CLASSROOMS A1-A6			X				X
3.	CLASSROOM A7			X				X
4.	CLASSROOMS B1-B6			X		X		X
5.	CLASSROOMS C1-C6			X				X
6.	CLASSROOM C7			X				X
7.	CLASSROOM D7			X		X		X
8.	CLASSROOM E8			X		X		X
9.	ROOM F9 (LIBRARY)	X		X				X
10.	CLASSROOM 10			X		X		X
11.	OFFICE	X		X				X
12.	PORTABLES M1-M12	X		X				X
13.	PORTABLES T3-T5	X		X				X
14.	E11 STORAGE SHED NO SUSPECT MATERIALS							
15.	C-TRAIN STORAGE NO SUSPECT MATERIALS							
16.								
17.								

C:\Users\selbert\Entek Consulting Group, Inc\Entekgroup - Documents\Clients\Center USD\20-5551 3 Yr Reinspections\Sites\Dudley ES\Dudley Form B.wpd

See attached "Homogeneous Materials Records" for all materials and their locations by building. On Form B all buildings are listed, and a summary of all non-friable and friable material is provided. Friable materials and their locations are listed separately under each building on Form B.

THREE-YEAR REINSPECTION HOMOGENEOUS ACBM RECORDS

Date of Inspection: November 6, 2020

District: Center Unified School District

Inspector: Matt Reilly

School: Dudley Elementary School

Building: Cafeteria/MP

Material Class	Material	Homo Mat. #	% Asb.	Ft ² /L.F.	Location	Condition: Code & Comments	Friable Yes/No
S	PLASTER	1	NONE DETECTED	5,250 S	MPR/STAGE, SUB-STAGE, RESTROOM, STORAGE, AND KITCHEN	(13) REPRESENTED BY SAMPLES HMS-DE-S23-01A-E COLLECTED ON 5-11-92.	N
M	12" CEILING TILE (FISSURE PATTERN)	5	NONE DETECTED	3,200 S	MPR/STAGE	(13) REPRESENTED BY SAMPLES HMS-DE-S23-05A-C COLLECTED ON 5-11-92.	N
M	PIPEWRAP (PAPER)	6	NONE DETECTED	50 L	SUB-STAGE	(13) SAMPLES HMS-C93-04A-CF.	N
M	12" VINYL FLOOR TILE (GRAY) & MASTIC	172	ASSUMED POSITIVE	2,400 S	MPR	(1) (4)	N
M	EPOXY (TAN) FLOOR COATING	173	ASSUMED POSITIVE	400 S	KITCHEN	(1) (4)	N
M	6" VINYL COVE BASE MASTIC (BROWN)	188	<1% FIBROUS TREMOLITE	100 L	MPR	(1) (4) SAMPLE ECG-07-735-24A COLLECTED ON 2-21-08.	N
S	STUCCO	189	NONE DETECTED	UNDETERMINED	EXTERIOR UNDERSIDE OF PORTICO AT MPR	(13) SAMPLES ECG-07-735-32A & B COLLECTED ON 2-21-08.	N
M	12" VINYL FLOOR TILE (LIGHT BLUE) & MASTIC	202	ASSUMED POSITIVE	40 S	CUSTODIAL CLOSET	(1) (4)	N

C:\Users\selbert\Entek Consulting Group, Inc\Entekgroup - Documents\Clients\Center USD\20-5551 3 Yr Reinspections\Sites\Dudley ES\Dudley HMR.wpd

CONDITION CODE

General Condition: (1) Good (2) Damaged (3) Significantly Damaged (25% or more)
Change in Condition: (4) No (5) Yes (If Yes, explain under comments)
Abated: (6) Repaired (7) Removed (8) Encapsulated (9) Enclosed (10) Isolated & Restricted
Miscellaneous: (11) Inaccessible, no inspection data (12) Other (Explain under comments) (13) Non-Asbestos/Not Inspected

CONSULT ORIGINAL AND SUPPLEMENTARY INSPECTION REPORTS FOR MATERIALS WITH TRACE AMOUNTS OF ASBESTOS

THREE-YEAR REINSPECTION HOMOGENEOUS ACBM RECORDS

Date of Inspection: November 6, 2020

District: Center Unified School District

Inspector: Matt Reilly

School: Dudley Elementary School

Building: Classrooms A1-A6

Material Class	Material	Homo Mat. #	% Asb.	Ft ² /L.F.	Location	Condition: Code & Comments	Friable Yes/No
S	PLASTER	1	NONE DETECTED	11,000 S	CLASSROOMS A1-A6	(13) REPRESENTED BY SAMPLE HMS-DE-S23-01E COLLECTED ON 5-11-92 AND ECG-07-735-01B COLLECTED ON 6-4-08.	N
M	12" CEILING TILE (FISSURE PATTERN)	5	NONE DETECTED	1,280 S	CLASSROOMS A1-A6	(13) REPRESENTED BY SAMPLES HMS-DE-S23-05A-C COLLECTED ON 5-11-92.	N
M	BLACK ROOF MASTIC	190	NONE DETECTED	UNDETERMINED	ROOF	(12) NOT COVERED BY AHERA (13) SAMPLE ECG-07-735-187A COLLECTED ON 2-21-08.	N
S	DRYWALL TEXTURE	191	NONE DETECTED	UNDETERMINED	CLASSROOMS A5 & A6	(13) SAMPLES ECG-07-735-34A-C COLLECTED ON 2-21-08.	N
M	CARPET ADHESIVE (YELLOW)	192	NONE DETECTED	UNDETERMINED	CLASSROOM A1	(13) SAMPLE ECG-07-735-40B COLLECTED ON 2-21-08.	N
M	12" VINYL FLOOR TILE (GRAY MOTTLED) & MASTIC	203	ASSUMED POSITIVE	1,080 S	CLASSROOMS A1-A6	(1) (4)	N
M	6" COVE BASE (GRAY) ADHESIVE	204	ASSUMED POSITIVE	720 L	CLASSROOMS A1-A6	(1) (4)	N

C:\Users\selbert\Entek Consulting Group, Inc\Entekgroup - Documents\Clients\Center USD\20-5551 3 Yr Reinspections\Sites\Dudley ES\Dudley HMR.wpd

CONDITION CODE

General Condition: (1) Good (2) Damaged (3) Significantly Damaged (25% or more)
Change in Condition: (4) No (5) Yes (If Yes, explain under comments)
Abated: (6) Repaired (7) Removed (8) Encapsulated (9) Enclosed (10) Isolated & Restricted
Miscellaneous: (11) Inaccessible, no inspection data (12) Other (Explain under comments) (13) Non-Asbestos/Not Inspected

CONSULT ORIGINAL AND SUPPLEMENTARY INSPECTION REPORTS FOR MATERIALS WITH TRACE AMOUNTS OF ASBESTOS

THREE-YEAR REINSPECTION HOMOGENEOUS ACBM RECORDS

Date of Inspection: November 6, 2020

District: Center Unified School District

Inspector: Matt Reilly

School: Dudley Elementary School

Building: Classroom A7

Material Class	Material	Homo Mat. #	% Asb.	Ft ² /L.F.	Location	Condition: Code & Comments	Friable Yes/No
M	DRYWALL	98	ASSUMED POSITIVE	2,000 S	CLASSROOM A7	(11) DRYWALL IS ASSUMED TO EXIST BEHIND ALL WALL SURFACES.	N
M	4" COVE BASE (BLUE)	174	ASSUMED POSITIVE	120 L	CLASSROOM A7	(1) (4)	N
M	CARPET ADHESIVE	211	ASSUMED POSITIVE	900 S	CLASSROOM A7	(1) (4)	N
M	2'X4' CEILING PANELS	N/A	NOT SUSPECT	900 S	CLASSROOM A7	(13) VINYL COATED FIBERGLASS PANELS	N

C:\Users\selbert\Entek Consulting Group, Inc\Entekgroup - Documents\Clients\Center USD\20-5551 3 Yr Reinspections\Sites\Dudley ES\Dudley HMR.wpd

CONDITION CODE

General Condition: (1) Good (2) Damaged (3) Significantly Damaged (25% or more)
Change in Condition: (4) No (5) Yes (If Yes, explain under comments)
Abated: (6) Repaired (7) Removed (8) Encapsulated (9) Enclosed (10) Isolated & Restricted
Miscellaneous: (11) Inaccessible, no inspection data (12) Other (Explain under comments) (13) Non-Asbestos/Not Inspected

CONSULT ORIGINAL AND SUPPLEMENTARY INSPECTION REPORTS FOR MATERIALS WITH TRACE AMOUNTS OF ASBESTOS

THREE-YEAR REINSPECTION HOMOGENEOUS ACBM RECORDS

Date of Inspection: November 6, 2020

District: Center Unified School District

Inspector: Matt Reilly

School: Dudley Elementary School

Building: Classrooms B1-B6

Material Class	Material	Homo. Mat. #	% Asb.	Ft ² /L.F.	Location	Condition: Code & Comments	Friable Yes/No
S	PLASTER	1	NONE DETECTED	12,000 S	CLASSROOMS B1-B6	(13) REPRESENTED BY SAMPLES HMS-DE-S23-01A-E COLLECTED ON 5-11-92.	N
M	12" CEILING TILE (FISSURE PATTERN)	5	NONE DETECTED	6,000 S	CLASSROOMS B1-B6	(13) REPRESENTED BY SAMPLES HMS-DE-S23-05A-C COLLECTED ON 5-11-92.	N
M	DRYWALL & JOINT COMPOUND	193	NONE DETECTED	UNDETERMINED	CLASSROOM B1	(13) SAMPLE ECG-07-735-33A COLLECTED ON 2-21-08.	N
M	ROOF MASTIC (BLACK)	194	1-5%	UNDETERMINED	ROOF	(12) NOT COVERED UNDER AHERA (1) SAMPLE ECG-07-735-187A COLLECTED ON 2-21-08.	N
M	CARPET ADHESIVE (YELLOW)	195	NONE DETECTED	UNDETERMINED	CLASSROOM B1	(13) SAMPLE ECG-07-735-40A COLLECTED ON 6-2-08.	N
M	12" VINYL FLOOR TILE (GRAY) & MASTIC	203	ASSUMED POSITIVE	1,080 S	CLASSROOMS B1-B6	(1) (4)	N
M	6" COVE BASE (GRAY) ADHESIVE	204	ASSUMED POSITIVE	720 L	CLASSROOMS B1-B6	(1) (4)	N

C:\Users\selbert\Entek Consulting Group, Inc\Entekgroup - Documents\Clients\Center USD\20-5551 3 Yr Reinspections\Sites\Dudley ES\Dudley HMR.wpd

CONDITION CODE

General Condition: (1) Good (2) Damaged (3) Significantly Damaged (25% or more)

Change in Condition: (4) No (5) Yes (If Yes, explain under comments)

Abated: (6) Repaired (7) Removed (8) Encapsulated (9) Enclosed (10) Isolated & Restricted

Miscellaneous: (11) Inaccessible, no inspection data (12) Other (Explain under comments) (13) Non-Asbestos/Not Inspected

CONSULT ORIGINAL AND SUPPLEMENTARY INSPECTION REPORTS FOR MATERIALS WITH TRACE AMOUNTS OF ASBESTOS

THREE-YEAR REINSPECTION HOMOGENEOUS ACBM RECORDS

Date of Inspection: November 6, 2020

District: Center Unified School District

Inspector: Matt Reilly

School: Dudley Elementary School

Building: Classrooms C1-C6

Material Class	Material	Homo. Mat. #	% Asb.	Ft ² /L.F.	Location	Condition: Code & Comments	Friable Yes/No
M	12" CEILING TILE (FISSURE PATTERN)	5	NONE DETECTED	6,000 S	CLASSROOMS C1-C6	(13) SAMPLE HMS-DE-S23-05C COLLECTED ON 5-11-92.	N
S	PLASTER	15	NONE DETECTED	10,000 S	CLASSROOMS C1-C5	(13) SAMPLES HMS-C93-03A-C.	N
M	DRYWALL & JOINT COMPOUND	16	NONE DETECTED	2,000 S	CLASSROOM C6	(13) SAMPLES HMS-DE-S23-16A-C COLLECTED ON 5-11-92.	N
M	ROOF MASTIC (BLACK)	196	NONE DETECTED	UNDETERMINED	ROOF	(12) NOT COVERED UNDER AHERA (13) SAMPLE ECG-07-735-187C COLLECTED ON 2-21-08.	N
M	12" VINYL FLOOR TILE (GRAY) & MASTIC	203	ASSUMED POSITIVE	1,080 S	CLASSROOMS C1-C6	(1) (4)	N
M	6" COVE BASE (GRAY) ADHESIVE	204	ASSUMED POSITIVE	720 L	CLASSROOMS C1-C6	(1) (4)	N

C:\Users\selbert\Entek Consulting Group, Inc\Entekgroup - Documents\Clients\Center USD\20-5551 3 Yr Reinspections\Sites\Dudley ES\Dudley HMR.wpd

CONDITION CODE

General Condition: (1) Good (2) Damaged (3) Significantly Damaged (25% or more)
Change in Condition: (4) No (5) Yes (If Yes, explain under comments)
Abated: (6) Repaired (7) Removed (8) Encapsulated (9) Enclosed (10) Isolated & Restricted
Miscellaneous: (11) Inaccessible, no inspection data (12) Other (Explain under comments) (13) Non-Asbestos/Not Inspected

CONSULT ORIGINAL AND SUPPLEMENTARY INSPECTION REPORTS FOR MATERIALS WITH TRACE AMOUNTS OF ASBESTOS

THREE-YEAR REINSPECTION HOMOGENEOUS ACBM RECORDS

Date of Inspection: November 6, 2020

District: Center Unified School District

Inspector: Matt Reilly

School: Dudley Elementary School

Building: Classroom C7

Material Class	Material	Homo. Mat. #	% Asb.	Ft ² /L.F.	Location	Condition: Code & Comments	Friable Yes/No
M	DRYWALL	98	ASSUMED POSITIVE	2,000 S	CLASSROOM C7	(11) UNFINISHED DRYWALL IS ASSUMED TO EXIST BEHIND ALL TAGBOARD.	N
M	4" COVE BASE (BLUE)	176	ASSUMED POSITIVE	120 L	CLASSROOM C7	(1) (4)	N
M	CARPET ADHESIVE	211	ASSUMED POSITIVE	900 S	CLASSROOM C7	(1) (4)	N
M	2'X4' CEILING PANELS	N/A	NOT SUSPECT	900 S	CLASSROOM C7	(13) VINYL COATED FIBERGLASS PANELS	N

C:\Users\selbert\Entek Consulting Group, Inc\Entekgroup - Documents\Clients\Center USD\20-5551 3 Yr Reinspections\Sites\Dudley ES\Dudley HMR.wpd

CONDITION CODE

General Condition: (1) Good (2) Damaged (3) Significantly Damaged (25% or more)
Change in Condition: (4) No (5) Yes (If Yes, explain under comments)
Abated: (6) Repaired (7) Removed (8) Encapsulated (9) Enclosed (10) Isolated & Restricted
Miscellaneous: (11) Inaccessible, no inspection data (12) Other (Explain under comments) (13) Non-Asbestos/Not Inspected

CONSULT ORIGINAL AND SUPPLEMENTARY INSPECTION REPORTS FOR MATERIALS WITH TRACE AMOUNTS OF ASBESTOS

THREE-YEAR REINSPECTION HOMOGENEOUS ACBM RECORDS

Date of Inspection: November 6, 2020

District: Center Unified School District

Inspector: Matt Reilly

School: Dudley Elementary School

Building: Classroom D-7

Material Class	Material	Homo Mat. #	% Asb.	Ft ² /L.F.	Location	Condition: Code & Comments	Friable Yes/No
S	PLASTER	1	NONE DETECTED	3,300 S	CLASSROOM 7, RESTROOM, D12 AND CUSTODIAL	(13) SAMPLE HMS-DE-S23-01E COLLECTED ON 5-11-92.	N
M	12" CEILING TILE (FISSURE PATTERN)	5	NONE DETECTED	1,140 S	CLASSROOM 7, RESTROOM, AND CUSTODIAL	(13) SAMPLE HMS-DE-S23-05B COLLECTED ON 5-11-92.	N
M	DRYWALL & JOINT COMPOUND	10	1-5% IN JOINT COMPOUND	289 S	CUSTODIAL AND D12	(1) (4)	N
M	9" VINYL FLOOR TILE (GRAY) & MASTIC	13	10%	1,100 S	CLASSROOM 7	(11) (7) COVERED WITH CARPET IN CLASSROOM SERVER ROOM & RESTROOM	N
M	12" VINYL FLOOR TILE (LIGHT BLUE) & MASTIC	168	ASSUMED POSITIVE	150 S	CLASSROOM 7	(11) COVERED WITH CARPET & MATERIAL 203	N
M	12" VINYL FLOOR TILE (GRAY) & MASTIC	203	ASSUMED POSITIVE	180 S	CLASSROOM 7	(1) (4)	N
M	6" COVE BASE (GRAY) ADHESIVE	204	ASSUMED POSITIVE	120 L	CLASSROOM 7	(1) (4)	N
M	CARPET ADHESIVE	211	ASSUMED POSITIVE	720 S	CLASSROOM 7	(1) (4)	N

C:\Users\selbert\Entek Consulting Group, Inc\Entekgroup - Documents\Clients\Center USD\20-5551 3 Yr Reinspections\Sites\Dudley ES\Dudley HMR.wpd

CONDITION CODE

General Condition: (1) Good (2) Damaged (3) Significantly Damaged (25% or more)
 Change in Condition: (4) No (5) Yes (If Yes, explain under comments)
 Abated: (6) Repaired (7) Removed (8) Encapsulated (9) Enclosed (10) Isolated & Restricted
 Miscellaneous: (11) Inaccessible, no inspection data (12) Other (Explain under comments) (13) Non-Asbestos/Not Inspected

CONSULT ORIGINAL AND SUPPLEMENTARY INSPECTION REPORTS FOR MATERIALS WITH TRACE AMOUNTS OF ASBESTOS

THREE-YEAR REINSPECTION HOMOGENEOUS ACBM RECORDS

Date of Inspection: November 6, 2020

District: Center Unified School District

Inspector: Matt Reilly

School: Dudley Elementary School

Building: Classroom E-8

Page 1 of 2

Material Class	Material	Homo Mat. #	% Asb.	Ft ² /L.F.	Location	Condition: Code & Comments	Friable Yes/No
S	PLASTER	1	NONE DETECTED	4,000 S	CLASSROOM E-8, RESTROOMS, AND MECHANICAL ROOM	(13) SAMPLE HMS-DE-S23-01D COLLECTED ON 5-11-92.	N
M	12" CEILING TILE (FISSURE PATTERN)	5	NONE DETECTED	1,200 S	CLASSROOM E-8	(13) REPRESENTED BY SAMPLES HMS-05A-C COLLECTED ON 5-11-92.	N
M	9" VINYL FLOOR TILE (BEIGE) & MASTIC	12	ASSUMED POSITIVE	1,200 S	CLASSROOM E-8	(11) (4) COVERED WITH CARPET.	N
M	12" VINYL FLOOR TILE (BLUE/GRAY) & YELLOW MASTIC	162	NONE DETECTED	200 S	MECHANICAL ROOM AND CLASSROOM 8	(13) SAMPLE ECG-07-735-162A COLLECTED ON 2-21-08.	N
M	4" COVE BASE (GRAY) ADHESIVE	163	ASSUMED POSITIVE	40 L	MECHANICAL ROOM	(1) (4)	N
M	DRYWALL & JOINT COMPOUND	164	ASSUMED POSITIVE	900 S	MECHANICAL ROOM AND CUSTODIAL ROOM	(1) (4)	N
M	6" COVE BASE (GRAY) ADHESIVE	165	ASSUMED POSITIVE	120 L	CLASSROOM E-8	(1) (4)	N

C:\Users\selbert\Entek Consulting Group, Inc\Entekgroup - Documents\Clients\Center USD\20-5551 3 Yr Reinspections\Sites\Dudley ES\Dudley HMR.wpd

CONDITION CODE

General Condition: (1) Good (2) Damaged (3) Significantly Damaged (25% or more)
 Change in Condition: (4) No (5) Yes (If Yes, explain under comments)
 Abated: (6) Repaired (7) Removed (8) Encapsulated (9) Enclosed (10) Isolated & Restricted
 Miscellaneous: (11) Inaccessible, no inspection data (12) Other (Explain under comments) (13) Non-Asbestos/Not Inspected

CONSULT ORIGINAL AND SUPPLEMENTARY INSPECTION REPORTS FOR MATERIALS WITH TRACE AMOUNTS OF ASBESTOS

THREE-YEAR REINSPECTION HOMOGENEOUS ACBM RECORDS

Date of Inspection: November 6, 2020

District: Center Unified School District

Inspector: Matt Reilly

School: Dudley Elementary School

Building: Classroom E-8

Page 2 of 2

Material Class	Material	Homo Mat. #	% Asb.	Ft ² /L.F.	Location	Condition: Code & Comments	Friable Yes/No
M	ROOF MASTIC (BLACK)	197	1-5% CHRYSOTILE	UNDETERMINED	ROOF	(12) NOT COVERED UNDER AHERA (1) SAMPLE ECG-07-735-187E COLLECTED ON 2-21-08.	N
M	CARPET ADHESIVE	211	ASSUMED POSITIVE	600 S	CLASSROOM E-8	(1)	N
M	12" VINYL FLOOR TILE (GRAY MOTTLED) & MASTIC	212	ASSUMED POSITIVE	300 S	CLASSROOM E-8	(1)	N

C:\Users\selbert\Entek Consulting Group, Inc\Entekgroup - Documents\Clients\Center USD\20-5551 3 Yr Reinspections\Sites\Dudley ES\Dudley HMR.wpd

CONDITION CODE

General Condition: (1) Good (2) Damaged (3) Significantly Damaged (25% or more)
Change in Condition: (4) No (5) Yes (If Yes, explain under comments)
Abated: (6) Repaired (7) Removed (8) Encapsulated (9) Enclosed (10) Isolated & Restricted
Miscellaneous: (11) Inaccessible, no inspection data (12) Other (Explain under comments) (13) Non-Asbestos/Not Inspected

CONSULT ORIGINAL AND SUPPLEMENTARY INSPECTION REPORTS FOR MATERIALS WITH TRACE AMOUNTS OF ASBESTOS

THREE-YEAR REINSPECTION HOMOGENEOUS ACBM RECORDS

Date of Inspection: November 6, 2020

District: Center Unified School District

Inspector: Matt Reilly

School: Dudley Elementary School

Building: Room F-9 (Library)

Material Class	Material	Homo. Mat. #	% Asb.	Ft ² /L.F.	Location	Condition: Code & Comments	Friable Yes/No
S	PLASTER	1	NONE DETECTED	3,000 S	LIBRARY & STORAGE AREA	(13) SAMPLE HMS-DE-S23-01C COLLECTED ON 5-11-92.	N
M	12" CEILING TILE (FISSURE PATTERN)	5	NONE DETECTED	1,840 S	LIBRARY & STORAGE AREA	(13) SAMPLE HMS-DE-S23-05A COLLECTED ON 5-11-92.	N
M	6" COVE BASE (GRAY) ADHESIVE	156	ASSUMED POSITIVE	40 L	LIBRARY STORAGE ROOM	(1) (4)	N
S	TEXTURE (SPLATTER STYLE)	177	ASSUMED POSITIVE	3,000 S	LIBRARY & STORAGE AREA	(1) (4)	N
M	12" VINYL FLOOR TILE (GRAY MOTTLED) & MASTIC	203	ASSUMED POSITIVE	200 S	STORAGE AREA	(1) (4)	N
M	CARPET ADHESIVE	211	ASSUMED POSITIVE	1,200 S	LIBRARY	(1) (4)	N
M	6" COVE BASE (BLUE) ADHESIVE	213	ASSUMED POSITIVE	150 L	LIBRARY	(1) (4)	N

C:\Users\selbert\Entek Consulting Group, Inc\Entekgroup - Documents\Clients\Center USD\20-5551 3 Yr Reinspections\Sites\Dudley ES\Dudley HMR.wpd

CONDITION CODE

General Condition: (1) Good (2) Damaged (3) Significantly Damaged (25% or more)

Change in Condition: (4) No (5) Yes (If Yes, explain under comments)

Abated: (6) Repaired (7) Removed (8) Encapsulated (9) Enclosed (10) Isolated & Restricted

Miscellaneous: (11) Inaccessible, no inspection data (12) Other (Explain under comments) (13) Non-Asbestos/Not Inspected

CONSULT ORIGINAL AND SUPPLEMENTARY INSPECTION REPORTS FOR MATERIALS WITH TRACE AMOUNTS OF ASBESTOS

THREE-YEAR REINSPECTION HOMOGENEOUS ACBM RECORDS

Date of Inspection: November 6, 2020

District: Center Unified School District

Inspector: Matt Reilly

School: Dudley Elementary School

Building: Classroom 10

Material Class	Material	Homo Mat. #	% Asb.	Ft ² /L.F.	Location	Condition: Code & Comments	Friable Yes/No
S	PLASTER	1	NONE DETECTED	800 S	CLASSROOM 10	(13) SAMPLE HMS-DE-S23-01B COLLECTED ON 5-11-92 AND SAMPLE ECG-07-735-1A COLLECTED ON 2-21-08.	N
M	12" CEILING TILE (FISSURE PATTERN)	5	NONE DETECTED	1,850 S	CLASSROOM 10	(13) REPRESENTED BY SAMPLES HMS-DE-S23-05A-C COLLECTED ON 5-11-92.	N
M	SHEET VINYL FLOORING (CREAM WITH BLUE SPECKS)	179	NONE DETECTED	60 S	MEN'S AND WOMEN'S RESTROOM	(13) SAMPLE ECG-07-735-21A COLLECTED ON 2-2-21-08.	N
M	6" COVE BASE (GRAY) ADHESIVE	198	1% FIBROUS TREMOLITE	100 L	CLASSROOM 10	(1) (4) SAMPLE ECG-07-735-8A COLLECTED ON 2-21-08.	N
M	DRYWALL & JOINT COMPOUND	199	NONE DETECTED	UNDETERMINED	CLASSROOM 10 & MEN'S RESTROOM	(13) SAMPLE ECG-07-735-14A & B COLLECTED ON 2-21-08.	N
S	DRYWALL TEXTURE	200	NONE DETECTED	UNDETERMINED	MEN'S RESTROOM AND PTA ROOM	(13) SAMPLE ECG-07-735-20A & B COLLECTED ON 2-21-08.	N
M	12" VINYL FLOOR TILE (GRAY MOTTLED) & MASTIC	203	ASSUMED POSITIVE	40 S	CLASSROOM 10	(1) (4) LOCATED AT KITCHENETTE	N
M	CARPET ADHESIVE	211	ASSUMED POSITIVE	1,000 S	CLASSROOM 10	(1) (4)	N

C:\Users\selbert\Entek Consulting Group, Inc\Entekgroup - Documents\Clients\Center USD\20-5551 3 Yr Reinspections\Sites\Dudley ES\Dudley HMR.wpd

CONDITION CODE

General Condition: (1) Good (2) Damaged (3) Significantly Damaged (25% or more)
Change in Condition: (4) No (5) Yes (If Yes, explain under comments)
Abated: (6) Repaired (7) Removed (8) Encapsulated (9) Enclosed (10) Isolated & Restricted
Miscellaneous: (11) Inaccessible, no inspection data (12) Other (Explain under comments) (13) Non-Asbestos/Not Inspected

CONSULT ORIGINAL AND SUPPLEMENTARY INSPECTION REPORTS FOR MATERIALS WITH TRACE AMOUNTS OF ASBESTOS

THREE-YEAR REINSPECTION HOMOGENEOUS ACBM RECORDS

Date of Inspection: November 6, 2020

District: Center Unified School District

Inspector: Matt Reilly

School: Dudley Elementary School

Building: Office

Material Class	Material	Homo Mat. #	% Asb.	Ft ² /L.F.	Location	Condition: Code & Comments	Friable Yes/No
S	PLASTER	1	NONE DETECTED	2,400 S	ADMINISTRATION OFFICE	(13) SAMPLE HMS-DE-S23-01A COLLECTED ON 5-11-92.	N
M	12" CEILING TILE (FISSURE PATTERN)	5	NONE DETECTED	1,700 S	ADMINISTRATION OFFICE	(13) REPRESENTED BY SAMPLES HMS-DE-S23-05A-C COLLECTED ON 5-11-92.	N
M	6" COVE BASE (GRAY) ADHESIVE	152	ASSUMED POSITIVE	200 L	ADMINISTRATION OFFICE, OFFICES 1-4, AND RESTROOMS 2 & 3	(1) (4)	N
M	DRYWALL & JOINT COMPOUND	153	ASSUMED POSITIVE	4,000 S	ADMINISTRATION OFFICE, OFFICES 1-4, RESTROOM 1, NURSE'S OFFICE, AND NURSE'S RESTROOM	(1) (4)	N
S	DRYWALL TEXTURE (ORANGE PEEL STYLE)	180	ASSUMED POSITIVE	4,000 S	ADMINISTRATION OFFICE, OFFICES 1-4, RESTROOM 1, NURSE'S OFFICE, AND NURSE'S RESTROOM	(1) (4)	N
M	ROOF MASTIC (BLACK)	201	1-5% CHRYSOTILE	UNDETERMINED	ROOF	(12) NOT COVERED UNDER AHERA SAMPLE ECG-07-735-187D COLLECTED ON 2-21-08.	N
M	12" VINYL FLOOR TILE (GRAY MOTTLED) & MASTIC	203	ASSUMED POSITIVE	300 S	OFFICE ENTRY, NURSE, RESTROOM	(1) (4)	N
M	12" CEILING TILE (1/8" HOLES PATTERN)	214	ASSUMED POSITIVE	50 S	MEN & WOMEN RESTROOMS AT EXTERIOR OF BUILDING	(1) (4)	N

C:\Users\selbert\Entek Consulting Group, Inc\Entekgroup - Documents\Clients\Center USD\20-5551 3 Yr Reinspections\Sites\Dudley ES\Dudley HMR.wpd

CONDITION CODE

General Condition: (1) Good (2) Damaged (3) Significantly Damaged (25% or more)
Change in Condition: (4) No (5) Yes (If Yes, explain under comments)
Abated: (6) Repaired (7) Removed (8) Encapsulated (9) Enclosed (10) Isolated & Restricted
Miscellaneous: (11) Inaccessible, no inspection data (12) Other (Explain under comments) (13) Non-Asbestos/Not Inspected

CONSULT ORIGINAL AND SUPPLEMENTARY INSPECTION REPORTS FOR MATERIALS WITH TRACE AMOUNTS OF ASBESTOS

THREE-YEAR REINSPECTION HOMOGENEOUS ACBM RECORDS

Date of Inspection: November 6, 2020

District: Center Unified School District

Inspector: Matt Reilly

School: Dudley Elementary School

Building: Portables M1-M12

Page 1 of 2

Material Class	Material	Homo Mat. #	% Asb.	Ft ² /L.F.	Location	Condition: Code & Comments	Friable Yes/No
M	DRYWALL	150	ASSUMED POSITIVE	7,500 S	PORTABLES M1-M8	(11) UNFINISHED DRYWALL IS ASSUMED TO EXIST BEHIND TAGBOARD.	N
M	4" COVE BASE (GRAY) ADHESIVE	170	ASSUMED POSITIVE	720 L	PORTABLES M5, M7, M8 & M12	(1) (4)	N
M	12" VINYL FLOOR TILE (WHITE/BLUE) & MASTIC	183	ASSUMED POSITIVE	10 S	PORTABLE M6	(11) ASSUMED TO EXIST BENEATH SELF ADHESIVE CARPET SQUARES.	N
M	12" VINYL FLOOR TILE (GRAY MOTTLED) & MASTIC	203	ASSUMED POSITIVE	1,200 S	PORTABLES M1 & M2	(1) (4)	N
M	SHEET VINYL (MULTI-COLORED)	205	ASSUMED POSITIVE	300 S	PORTABLES M1 & M2	(5) MATERIAL NOT FOUND IN M1 (1) (4) MATERIAL LOCATED AT KITCHEN AREA, RESTROOMS AND OFFICE	N
M	DRYWALL	206	ASSUMED POSITIVE	500 S	PORTABLE M2	(1) (4)	N
S	WALL TEXTURE (KNOCKDOWN STYLE)	207	ASSUMED POSITIVE	500 S	PORTABLE M2	(1) (4)	N

C:\Users\selbert\Entek Consulting Group, Inc\Entekgroup - Documents\Clients\Center USD\20-5551 3 Yr Reinspections\Sites\Dudley ES\Dudley HMR.wpd

CONDITION CODE

General Condition: (1) Good (2) Damaged (3) Significantly Damaged (25% or more)
Change in Condition: (4) No (5) Yes (If Yes, explain under comments)
Abated: (6) Repaired (7) Removed (8) Encapsulated (9) Enclosed (10) Isolated & Restricted
Miscellaneous: (11) Inaccessible, no inspection data (12) Other (Explain under comments) (13) Non-Asbestos/Not Inspected

CONSULT ORIGINAL AND SUPPLEMENTARY INSPECTION REPORTS FOR MATERIALS WITH TRACE AMOUNTS OF ASBESTOS

THREE-YEAR REINSPECTION HOMOGENEOUS ACBM RECORDS

Date of Inspection: November 6, 2020

District: Center Unified School District

Inspector: Matt Reilly

School: Dudley Elementary School

Building: Portables M1-M12

Page 2 of 2

Material Class	Material	Homo Mat. #	% Asb.	Ft ² /L.F.	Location	Condition: Code & Comments	Friable Yes/No
M	4" COVE BASE (BLUE) ADHESIVE	208	ASSUMED POSITIVE	120 L	PORTABLES M3, M4, & M6	(1) (4)	N
M	4" COVE BASE (LIGHT BROWN) ADHESIVE	209	ASSUMED POSITIVE	360 L	PORTABLES M9, M10 & M11	(1) (4)	N
M	2' X 4' CEILING PANELS	210	ASSUMED POSITIVE	4,000 S	PORTABLES M5, M6, M9, M10, M11 & M12	(1) (4)	N
M	CARPET ADHESIVE	211	ASSUMED POSITIVE	7,200 S	PORTABLES M3, M4, M5, M7, M9, M10, M11 & M12	(1) (4)	N
M	4" COVE BASE (BROWN) ADHESIVE	215	ASSUMED POSITIVE	240 L	PORTABLES M1 & M2	(1) (4)	N
M	2'X4' CEILING PANELS	N/A	NOT SUSPECT	3,000 S	PORTABLES M1, M3, M7, M8, M11 & M12	(13) VINYL COATED FIBERGLASS PANELS	N/A

C:\Users\selbert\Entek Consulting Group, Inc\Entekgroup - Documents\Clients\Center USD\20-5551 3 Yr Reinspections\Sites\Dudley ES\Dudley HMR.wpd

CONDITION CODE

General Condition: (1) Good (2) Damaged (3) Significantly Damaged (25% or more)
Change in Condition: (4) No (5) Yes (If Yes, explain under comments)
Abated: (6) Repaired (7) Removed (8) Encapsulated (9) Enclosed (10) Isolated & Restricted
Miscellaneous: (11) Inaccessible, no inspection data (12) Other (Explain under comments) (13) Non-Asbestos/Not Inspected

CONSULT ORIGINAL AND SUPPLEMENTARY INSPECTION REPORTS FOR MATERIALS WITH TRACE AMOUNTS OF ASBESTOS

**THREE-YEAR REINSPECTION
HOMOGENEOUS ACBM RECORDS**

Date of Inspection: November 6, 2020

District: Center Unified School District

Inspector: Matt Reilly

School: Dudley Elementary School

Building: Portables T3-T5

Material Class	Material	Homo Mat. #	% Asb.	Ft ² /L.F.	Location	Condition: Code & Comments	Friable Yes/No
M	DRYWALL	151	ASSUMED POSITIVE	3,700 S	PORTABLES T3-T5	(11) DRYWALL IS ASSUMED TO EXIST BEHIND TAGBOARD IN T3 & T5.	N
M	4" COVE BASE (BLUE) ADHESIVE	171	ASSUMED POSITIVE	400 L	PORTABLES T3-T5	(1) (4)	N
M	2' X 4' CEILING PANELS	184	NONE DETECTED	2,400 S	PORTABLES T3-T5	(13) SAMPLE ECG-07-735-184A COLLECTED ON 2-21-08.	Y
M	DRYWALL & JOINT COMPOUND	185	ASSUMED POSITIVE	2,000 S	PORTABLE T4	(1) (4)	N
S	TEXTURE (KNOCKDOWN STYLE)	186	ASSUMED POSITIVE	2,000 S	PORTABLE T4	(1) (4)	N
M	CARPET ADHESIVE	211	ASSUMED POSITIVE	2,500 S	PORTABLES T3 - T5	(1) (4)	N

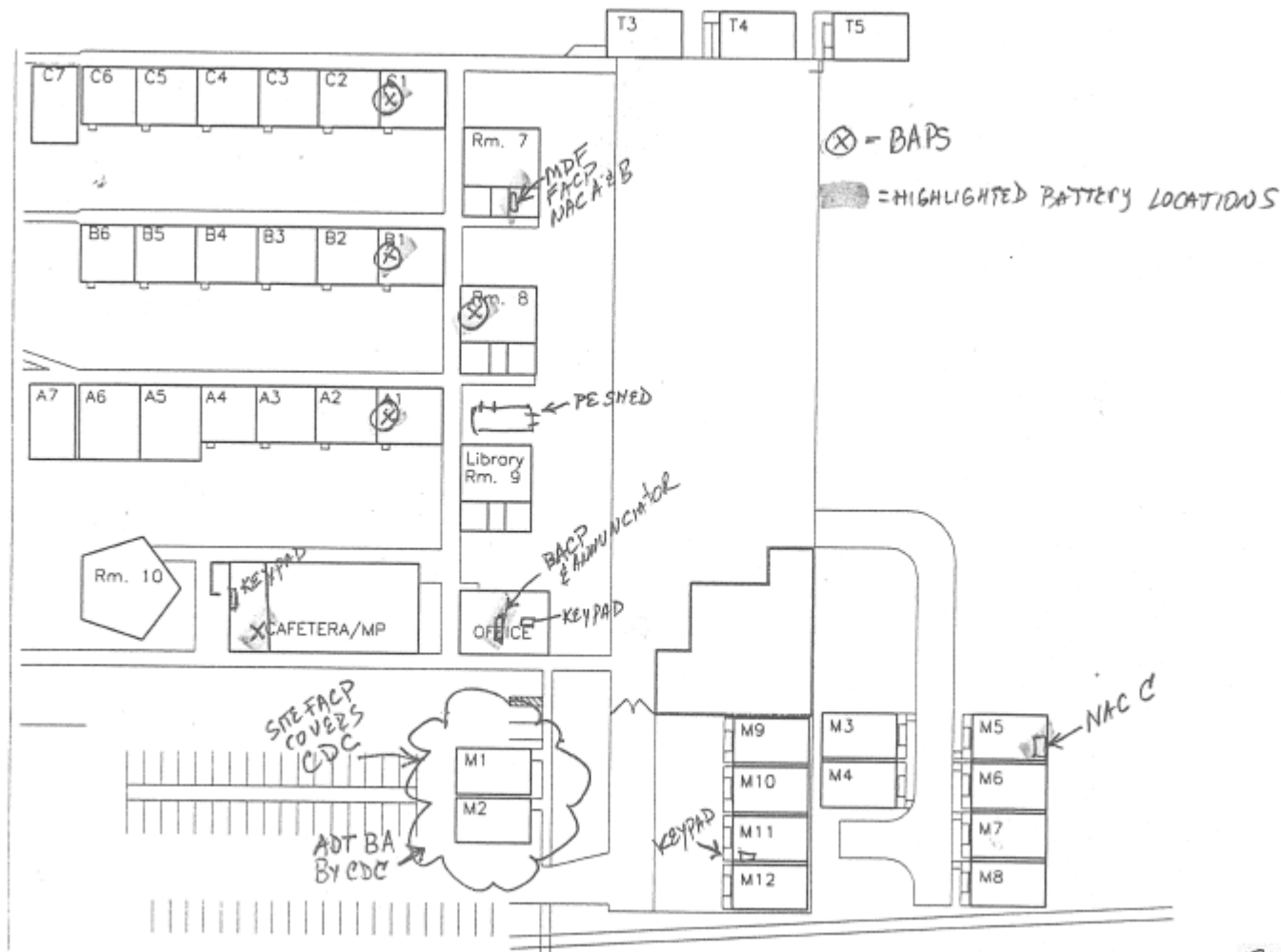
C:\Users\selbert\Entek Consulting Group, Inc\Entekgroup - Documents\Clients\Center USD\20-5551 3 Yr Reinspections\Sites\Dudley ES\Dudley HMR.wpd

CONDITION CODE

General Condition: (1) Good (2) Damaged (3) Significantly Damaged (25% or more)
Change in Condition: (4) No (5) Yes (If Yes, explain under comments)
Abated: (6) Repaired (7) Removed (8) Encapsulated (9) Enclosed (10) Isolated & Restricted
Miscellaneous: (11) Inaccessible, no inspection data (12) Other (Explain under comments) (13) Non-Asbestos/Not Inspected

CONSULT ORIGINAL AND SUPPLEMENTARY INSPECTION REPORTS FOR MATERIALS WITH TRACE AMOUNTS OF ASBESTOS

Dudley (Arthur S.) Elementary School



Mr. Reilly

Center Unified School District
Dudley (Arthur S.) Elementary School
8000 Aztec Way
Antelope, CA 95843

Entek Consulting Group, Inc.
4200 Rocklin Road, Suite 7
Rocklin, CA 95677
Map Not to Scale

Three-Year AHERA Reinspection
Conducted by Matt Reilly
On November 6, 2020
Project Number 20-5551

Global Charter School

RECORD OF FRIABLE AND NON-FRIABLE ACM
(FORM B)

Inspection Date: November 6, 2020

THREE-YEAR REINSPECTION

SCHOOL Global Charter School - NO LONGER IN OPERATION AS OF JULY 2017 - FACILITY IS NOW GENERAL DISTRICT OFFICES					CDS CODE 34-73973-6032916
ADDRESS (NUMBER) (STREET) (CITY) (ZIP) 8300 Watt Avenue Antelope, CA 95843					SCHOOL PHONE NUMBER (916) 338-6450

-IMPORTANT-

Each building and functional space with friable ACM or friable assumed ACM listed on this form requires completion of FORM C (PHYSICAL AND HAZARD ASSESSMENT OF FRIABLE ACM OR FRIABLE ASSUMED ACM). Indicate location of material on blueprint, diagram or narrative in square or linear feet, and attach a copy (Sec. 763.93).

LINE	BUILDING NAME & FUNCTIONAL SPACE (Indicate Address if Different From Above)	CHECK ONE			CHECK ONE			
		SUR-FACING	TSI	MISC	ACBM		ASSUMED ACM	
					FRIABLE	NON-FRIABLE	FRIABLE	NON-FRIABLE
1.	PORTABLE CLASSROOMS 34-38 DISTRICT MUST CERTIFY							
2.	PORTABLE CLASSROOM 50 DISTRICT MUST CERTIFY							
3.	UNIT B & C			X				X
4.	UNIT H (PORTABLE CLASSROOMS 25-33) DISTRICT MUST CERTIFY							
5.	UNIT R DISTRICT MUST CERTIFY							
6.	UNIT S (PORTABLE CLASSROOMS 16-18) DISTRICT MUST CERTIFY							
7.	UNIT X (PORTABLE CLASSROOMS 11-14)			X				X
8.	UNIT Y (PORTABLE CLASSROOMS 40-43)			X				X
9.								
10.								
11.								
12.								
13.								
14.								

C:\Users\selbert\Entek Consulting Group, Inc\Entekgroup - Documents\Clients\Center USD\20-5551 3 Yr Reinspections\Sites\Global Charter School\Global Charter Form B.wpd

See attached "Homogeneous Materials Records" for all materials and their locations by building. On Form B all buildings are listed, and a summary of all non-friable and friable material is provided. Friable materials and their locations are listed separately under each building on Form B.

THREE-YEAR REINSPECTION HOMOGENEOUS ACBM RECORDS

Date of Inspection: November 6, 2020

District: Center Unified School District

Inspector: Matt Reilly

School: Global Charter School (No Longer in Operation as of July 2017)

Building: Units B & C (Charter Schools Administration)

Material Class	Material	Homo. Mat. #	% Asb.	Ft ² /L.F.	Location	Condition: Code & Comments	Friable Yes/No
M	DRYWALL & JOINT COMPOUND	1	NONE DETECTED	6,100 S	MUSIC ROOM, CLASSROOM 45, AND ARTS & CRAFTS	(13) SAMPLE HMS-CJHS-S23-01E COLLECTED ON 5-1-92.	N
M	12" CEILING TILE (FISSURE PATTERN)	4	NONE DETECTED	1,600 S	MUSIC ROOM AND CLASSROOM 45	(13) REPRESENTED BY SAMPLES HMS-CJHS-S23-04A-C COLLECTED ON 5-1-92.	N
M	12" VINYL FLOOR TILE (OFF-WHITE) & MASTIC	7	NONE DETECTED	2,700 S	MUSIC ROOM, CLASSROOM 45, AND ARTS & CRAFTS	(13) REPRESENTED BY SAMPLE HMS-CJHS-07A COLLECTED ON 5-1-92.	N
M	12" VINYL FLOOR TILE (BLUE) & MASTIC	10	NONE DETECTED	300 S	MUSIC ROOM	(13) SAMPLE HMS-CJHS-S23-10A COLLECTED ON 5-1-92.	N
M	4" COVE BASE (BLACK) ADHESIVE	127	ASSUMED POSITIVE	200 L	CLASSROOM 44	(1) (4)	N
M	2' X 4' CEILING PANELS (FISSURE PATTERN)	144	ASSUMED POSITIVE	960 S	ARTS & CRAFTS ROOM (MIDDLE ROOM)	(1) (4) WATER STRAIN IN STORAGE OF CRAFT ROOM.	N
S	WALL TEXTURE (ORANGE PEEL STYLE)	145	ASSUMED POSITIVE	2,000 S	CLASSROOMS 44 & 45	(1) (4)	N
S	WALL/CEILING TEXTURE (KNOCKDOWN)	147	ASSUMED POSITIVE	500 S	ROOM 45A AT STORAGE	(1) (4)	N

C:\Users\selbert\Entek Consulting Group, Inc\Entekgroup - Documents\Clients\Center USD\20-5551 3 Yr Reinspections\Sites\Global Charter School\Global Charter HMR.wpd

CONDITION CODE

General Condition: (1) Good (2) Damaged (3) Significantly Damaged (25% or more)
Change in Condition: (4) No (5) Yes (If Yes, explain under comments)
Abated: (6) Repaired (7) Removed (8) Encapsulated (9) Enclosed (10) Isolated & Restricted
Miscellaneous: (11) Inaccessible, no inspection data (12) Other (Explain under comments) (13) Non-Asbestos/Not Inspected

CONSULT ORIGINAL AND SUPPLEMENTARY INSPECTION REPORTS FOR MATERIALS WITH TRACE AMOUNTS OF ASBESTOS

THREE-YEAR REINSPECTION HOMOGENEOUS ACBM RECORDS

Date of Inspection: November 6, 2020

District: Center Unified School District

Inspector: Matt Reilly

School: Global Charter School (No Longer in Operation as of July 2017)

Building: Unit X (Portable Classrooms 11-14)

Material Class	Material	Homo. Mat. #	% Asb.	Ft ² /L.F.	Location	Condition: Code & Comments	Friable Yes/No
M	DRYWALL	99	ASSUMED POSITIVE	6,000 S	CLASSROOMS 11-14	(11) DRYWALL IS ASSUMED TO EXIST BEHIND ALL DRYWALL SURFACES.	N
M	4" COVE BASE (BLUE) ADHESIVE	153	ASSUMED POSITIVE	120 L	CLASSROOMS 11-14	(1) (4)	N
M	2' X 4' CEILING PANELS	N/A	NOT SUSPECT	3,600 S	CLASSROOMS 11-14	(13) VINYL COATED FIBERGLASS PANELS	N
M	CARPET ADHESIVE	161	ASSUMED POSITIVE	3,600 S	CLASSROOMS 11-14	(1) (4)	N

C:\Users\selbert\Entek Consulting Group, Inc\Entekgroup - Documents\Clients\Center USD\20-5551 3 Yr Reinspections\Sites\Global Charter School\Global Charter HMR.wpd

CONDITION CODE

General Condition: (1) Good (2) Damaged (3) Significantly Damaged (25% or more)
Change in Condition: (4) No (5) Yes (If Yes, explain under comments)
Abated: (6) Repaired (7) Removed (8) Encapsulated (9) Enclosed (10) Isolated & Restricted
Miscellaneous: (11) Inaccessible, no inspection data (12) Other (Explain under comments) (13) Non-Asbestos/Not Inspected

CONSULT ORIGINAL AND SUPPLEMENTARY INSPECTION REPORTS FOR MATERIALS WITH TRACE AMOUNTS OF ASBESTOS

THREE-YEAR REINSPECTION HOMOGENEOUS ACBM RECORDS

Date of Inspection: November 6, 2020

District: Center Unified School District

Inspector: Matt Reilly

School: Global Charter School (No Longer in Operation as of July 2017)

Building: Unit Y (Portable Classrooms 40-43)

Material Class	Material	Homo. Mat. #	% Asb.	Ft ² /L.F.	Location	Condition: Code & Comments	Friable Yes/No
M	DRYWALL	99	ASSUMED POSITIVE	6,000 S	CLASSROOMS 40-43	(11) DRYWALL IS ASSUMED TO EXIST BEHIND ALL DRYWALL SURFACES.	N
M	4" COVE BASE (BROWN) ADHESIVE	139	ASSUMED POSITIVE	200 L	CLASSROOM 41	(1) (4)	N
M	2' X 4' CEILING PANELS (FISSURE PATTERN)	140	ASSUMED POSITIVE	900 S	CLASSROOM 41	(1) (4)	N
M	SHEET VINYL FLOORING (GRAY)	141	ASSUMED POSITIVE	700 S	CLASSROOM 41 & RESTROOM	(2) DAMAGED LINOLEUM IN CLASSROOM 41.	N
M	4" COVE BASE (BLUE) ADHESIVE	150	ASSUMED POSITIVE	360 L	CLASSROOMS 40, 42, & 43	(1) (4)	N
M	2' X 4' CEILING PANELS	N/A	NOT SUSPECT	2,700 S	CLASSROOMS 40, 42, & 43	(13) VINYL COATED FIBERGLASS PANELS	N
M	CARPET ADHESIVE	161	ASSUMED POSITIVE	3,500 S	CLASSROOMS 40-43	(1) (4)	N

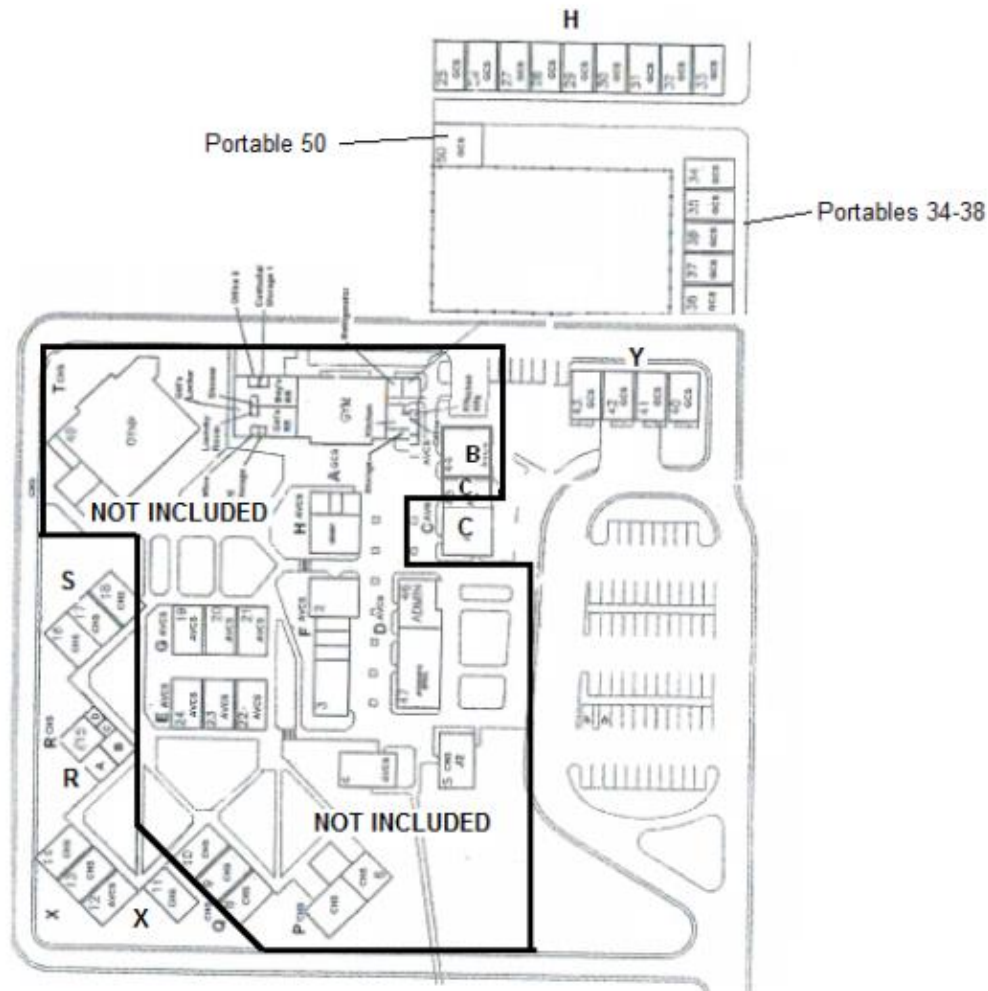
C:\Users\selbert\Entek Consulting Group, Inc\Entekgroup - Documents\Clients\Center USD\20-5551 3 Yr Reinspections\Sites\Global Charter School\Global Charter HMR.wpd

CONDITION CODE

General Condition: (1) Good (2) Damaged (3) Significantly Damaged (25% or more)
Change in Condition: (4) No (5) Yes (If Yes, explain under comments)
Abated: (6) Repaired (7) Removed (8) Encapsulated (9) Enclosed (10) Isolated & Restricted
Miscellaneous: (11) Inaccessible, no inspection data (12) Other (Explain under comments) (13) Non-Asbestos/Not Inspected

CONSULT ORIGINAL AND SUPPLEMENTARY INSPECTION REPORTS FOR MATERIALS WITH TRACE AMOUNTS OF ASBESTOS

Global Charter School No Longer in Operation – Facility is Now General District Offices



Center Unified School District
General District Offices – FKA: Global Charter School
8300 Watt Avenue
Antelope, CA 95843

Entek Consulting Group, Inc.
4200 Rocklin Road, Suite 7
Rocklin, CA 95677
Map Not to Scale

Three-Year AHERA Reinspection
Conducted by Matt Reilly
On November 6, 2020
Project Number 20-5551

McClellan High School

RECORD OF FRIABLE AND NON-FRIABLE ACM
(FORM B)

Inspection Date: November 6, 2020

THREE-YEAR REINSPECTION

SCHOOL McClellan High School					CDS CODE 34-73973-6104517	
ADDRESS (NUMBER) (STREET) (CITY) (ZIP) 8725 Watt Avenue Antelope, CA 95843					SCHOOL PHONE NUMBER (916) 338-6460	

-IMPORTANT-

Each building and functional space with friable ACM or friable assumed ACM listed on this form requires completion of FORM C (PHYSICAL AND HAZARD ASSESSMENT OF FRIABLE ACM OR FRIABLE ASSUMED ACM). Indicate location of material on blueprint, diagram or narrative in square or linear feet, and attach a copy (Sec. 763.93).

LINE	BUILDING NAME & FUNCTIONAL SPACE (Indicate Address if Different From Above)	CHECK ONE			CHECK ONE			
		SUR- FACING	TSI	MISC	ACBM		ASSUMED ACM	
					FRIABLE	NON- FRIABLE	FRIABLE	NON- FRIABLE
1.	UNIT A-MPR	X		X				X
2.	UNIT B-CLASSROOMS 0-2 & ADMINISTRATION OFFICES	X		X		X		X
3.	UNIT C-CLASSROOMS 3-6	X		X		X		X
4.	UNIT D-CLASSROOMS 7-12 & SCIENCE ROOM	X		X		X		X
5.	UNIT E-STORAGE NO ACM							
6.	WEIGHT ROOM	X		X				X
7.								
8.								
9.								
10.								
11.								
12.								
13.								
14.								
15.								
16.								
17.								
18.								

C:\Users\selbert\Entek Consulting Group, Inc\Entekgroup - Documents\Clients\Center USD\20-5551 3 Yr Reinspections\Sites\McClellan HS\McClellan Form B.wpd

See attached "Homogeneous Materials Records" for all materials and their locations by building. On Form B all buildings are listed, and a summary of all non-friable and friable material is provided. Friable materials and their locations are listed separately under each building on Form B.

THREE-YEAR REINSPECTION HOMOGENEOUS ACM RECORDS

Date of Inspection: November 6, 2020

District: Center Unified School District

Inspector: Matt Reilly

School: McClellan High School

Building: Unit A (MPR)

Material Class	Material	Homo Mat. #	% Asb.	Ft ² /L.F.	Location	Condition: Code & Comments	Friable Yes/No
S	PLASTER	4	NONE DETECTED	4,300 S	STORAGE, KITCHEN, PLENUM CLOSETS 1 & 2, AND WATER HEATER ROOM	(13) REPRESENTED BY SAMPLES HMS-MH-S23-04A-C COLLECTED ON 5-1-92.	N
M	12" CEILING TILE (1/8" HOLES) & MASTIC	19	NONE DETECTED	3,100 S	MPR	(13)	N
M	DRYWALL & JOINT COMPOUND	110	ASSUMED POSITIVE	200 S	STORAGE/PLENUM CLOSETS 1 & 2	(1) (4)	N
M	12" VINYL FLOOR TILE (LIGHT BLUE) & MASTIC	151	ASSUMED POSITIVE	2,000 S	MPR AND STORAGE/PLENUM CLOSETS 1 & 2	(1) (4)	N
M	6" COVE BASE (BLUE) ADHESIVE	152	ASSUMED POSITIVE	250 L	MPR AND STORAGE/PLENUM CLOSETS 1 & 2	(1) (4)	N
M	EPOXY FLOOR COATING (LIGHT BLUE)	153	ASSUMED POSITIVE	600 S	KITCHEN	(1) (4)	N
S	DRYWALL TEXTURE (ORANGE PEEL STYLE)	165	ASSUMED POSITIVE	200 S	STORAGE/PLENUM CLOSETS 1 & 2	(1) (4)	N

C:\Users\selbert\Entek Consulting Group, Inc\Entekgroup - Documents\Clients\Center USD\20-5551 3 Yr Reinspections\Sites\McClellan HS\McClellan HMR.wpd

CONDITION CODE

General Condition: (1) Good (2) Damaged (3) Significantly Damaged (25% or more)
Change in Condition: (4) No (5) Yes (If Yes, explain under comments)
Abated: (6) Repaired (7) Removed (8) Encapsulated (9) Enclosed (10) Isolated & Restricted
Miscellaneous: (11) Inaccessible, no inspection data (12) Other (Explain under comments) (13) Non-Asbestos/Not Inspected

CONSULT ORIGINAL AND SUPPLEMENTARY INSPECTION REPORTS FOR MATERIALS WITH TRACE AMOUNTS OF ASBESTOS

THREE-YEAR REINSPECTION HOMOGENEOUS ACBM RECORDS

Date of Inspection: November 6, 2020

District: Center Unified School District

Inspector: Matt Reilly

School: McClellan High School

Building: Unit B (Classrooms 0-2 & Administration Offices)

Page 1 of 2

Material Class	Material	Homo. Mat. #	% Asb.	Ft ² /L.F.	Location	Condition: Code & Comments	Friable Yes/No
S	PLASTER	4	NONE DETECTED	3,200 S	ADMINISTRATION OFFICE, PRE-SCHOOL RESTROOMS 1 & 2, OFFICE 1, NURSES OFFICE, AND CLASSROOMS 0-2	(13) SAMPLES HMS-MH-S23-04A-C COLLECTED ON 5-1-92.	N
M	9" VINYL FLOOR TILE (OLIVE) & MASTIC	9	6%	250 S	PRE-SCHOOL RESTROOMS 1 & 2	(1) (4) (11) COVERED WITH BLUE 12" VINYL FLOOR TILE IN PRE-SCHOOL (ROOM 0) RR2. (11) KNOWN TO EXIST BENEATH CARPET IN ROOMS 0-2	N
M	12" CEILING TILE (1/8" HOLES) & MASTIC	19	NONE DETECTED	2,100 S	OFFICE AND CLASSROOMS 0-2	(13)	N
M	DRYWALL & JOINT COMPOUND	112	ASSUMED POSITIVE	100 S	STAFF ROOMS	(1) (4)	N
M	6" COVE BASE (BLUE) ADHESIVE	154	ASSUMED POSITIVE	400 L	ADMINISTRATION OFFICE, OFFICE 1, COPY ROOM, STAFF LOUNGE, AND CLASSROOMS 0-2	(1) (4)	N
M	6" COVE BASE (GRAY) ADHESIVE	155	ASSUMED POSITIVE	40 L	NURSE OFFICE	(1) (4)	N

C:\Users\selbert\Entek Consulting Group, Inc\Entekgroup - Documents\Clients\Center USD\20-5551 3 Yr Reinspections\Sites\McClellan HS\McClellan HMR.wpd

CONDITION CODE

General Condition: (1) Good (2) Damaged (3) Significantly Damaged (25% or more)
Change in Condition: (4) No (5) Yes (If Yes, explain under comments)
Abated: (6) Repaired (7) Removed (8) Encapsulated (9) Enclosed (10) Isolated & Restricted
Miscellaneous: (11) Inaccessible, no inspection data (12) Other (Explain under comments) (13) Non-Asbestos/Not Inspected

CONSULT ORIGINAL AND SUPPLEMENTARY INSPECTION REPORTS FOR MATERIALS WITH TRACE AMOUNTS OF ASBESTOS

THREE-YEAR REINSPECTION HOMOGENEOUS ACBM RECORDS

Date of Inspection: November 6, 2020

District: Center Unified School District

Inspector: Matt Reilly

School: McClellan High School

Building: Unit B (Classrooms 0-2 & Administration Offices)

Page 2 of 2

Material Class	Material	Homo. Mat. #	% Asb.	Ft ² /L.F.	Location	Condition: Code & Comments	Friable Yes/No
M	12" VINYL FLOOR TILE (WHITE/BLUE) & MASTIC	156	ASSUMED POSITIVE	800 S	CLASSROOM 0-2	(1) (4)	N
M	12" VINYL FLOOR TILE (BLUE) & MASTIC	166	ASSUMED POSITIVE	300 S	OFFICE, STAFF ROOMS, NURSE OFFICE, AND PRE-SCHOOL RR2	(1) (4)	N
S	DRYWALL TEXTURE (KNOCKDOWN STYLE)	167	ASSUMED POSITIVE	1,000 S	STAFF ROOMS	(1) (4)	N
S	TEXTURE ON PLASTER	168	ASSUMED POSITIVE	3,200 S	CLASSROOMS 0-2	(1) (4)	N
M	CARPET ADHESIVE	174	ASSUMED POSITIVE	800 S	ADMINISTRATION OFFICE, PRINCIPAL, COPY ROOM & LOUNGE	(1) (4)	N
M	9" VINYL FLOOR TILE (BEIGE) & MASTIC	175	ASSUMED POSITIVE	9 S	ADMINISTRATION OFFICE AT STORAGE CLOSET	(1) (4) MAY BE PRESENT BENEATH CARPET FLOORING	N
M	12" CEILING TILE (FISSURE PATTERN) & MASTIC	176	ASSUMED POSITIVE	400 S	STAFF LOUNGE	(1) (4)	N

C:\Users\selbert\Entek Consulting Group, Inc\Entekgroup - Documents\Clients\Center USD\20-5551 3 Yr Reinspections\Sites\McClellan HS\McClellan HMR.wpd

CONDITION CODE

General Condition: (1) Good (2) Damaged (3) Significantly Damaged (25% or more)
Change in Condition: (4) No (5) Yes (If Yes, explain under comments)
Abated: (6) Repaired (7) Removed (8) Encapsulated (9) Enclosed (10) Isolated & Restricted
Miscellaneous: (11) Inaccessible, no inspection data (12) Other (Explain under comments) (13) Non-Asbestos/Not Inspected

CONSULT ORIGINAL AND SUPPLEMENTARY INSPECTION REPORTS FOR MATERIALS WITH TRACE AMOUNTS OF ASBESTOS

THREE-YEAR REINSPECTION HOMOGENEOUS ACBM RECORDS

Date of Inspection: November 6, 2020

District: Center Unified School District

Inspector: Matt Reilly

School: McClellan High School

Building: Unit C (Classrooms 3-6)

Material Class	Material	Homo. Mat. #	% Asb.	Ft ² /L.F.	Location	Condition: Code & Comments	Friable Yes/No
S	PLASTER	4	NONE DETECTED	5,200 S	CUSTODIAL STORAGE'S 1-3 AND BOY'S & GIRL'S RESTROOMS	(13) REPRESENTED BY SAMPLES HMS-MH-S23-04A-C COLLECTED ON 5-1-92.	N
M	9" VINYL FLOOR TILE (OFF WHITE) & MASTIC	10	10%	1,000 S	CLASSROOM 6	(11) COVERED WITH CARPET AND 12" FLOOR TILES.	N
M	12" CEILING TILE (1/8" HOLES) & MASTIC	19	NONE DETECTED	2,500 S	CLASSROOMS 3-6	(13)	N
M	9" VINYL FLOOR TILE & MASTIC	97	ASSUMED POSITIVE	3,000 S	CLASSROOMS 3-6	(11) COVERED WITH CARPET AND 12" FLOOR TILES.	N
M	12" VINYL FLOOR TILE (WHITE/BLUE) & MASTIC	150	ASSUMED POSITIVE	1,000 S	CLASSROOMS 3-6	(1) (4)	N
M	6" COVE BASE (BLACK) ADHESIVE	157	ASSUMED POSITIVE	30 L	CUSTODIAL STORAGE 3	(1) (4)	N
M	6" COVE BASE (BLUE) ADHESIVE	158	ASSUMED POSITIVE	480 L	CLASSROOMS 3-6	(1) (4)	N
S	TEXTURE ON PLASTER	169	ASSUMED POSITIVE	2,400 S	CLASSROOMS 3-6	(1) (4)	N
S	PLASTER	170	ASSUMED POSITIVE	2,400 S	CLASSROOMS 3-6	(1) (4)	N

C:\Users\selbert\Entek Consulting Group, Inc\Entekgroup - Documents\Clients\Center USD\20-5551 3 Yr Reinspections\Sites\McClellan HS\McClellan HMR.wpd

CONDITION CODE

General Condition: (1) Good (2) Damaged (3) Significantly Damaged (25% or more)
Change in Condition: (4) No (5) Yes (If Yes, explain under comments)
Abated: (6) Repaired (7) Removed (8) Encapsulated (9) Enclosed (10) Isolated & Restricted
Miscellaneous: (11) Inaccessible, no inspection data (12) Other (Explain under comments) (13) Non-Asbestos/Not Inspected

CONSULT ORIGINAL AND SUPPLEMENTARY INSPECTION REPORTS FOR MATERIALS WITH TRACE AMOUNTS OF ASBESTOS

THREE-YEAR REINSPECTION HOMOGENEOUS ACBM RECORDS

Date of Inspection: November 6, 2020

District: Center Unified School District

Inspector: Matt Reilly

School: McClellan High School

Building: Unit D (Classrooms 7-12 & Science Room)

Pg. 1 of 2

Material Class	Material	Homo. Mat. #	% Asb.	Ft ² /L.F.	Location	Condition: Code & Comments	Friable Yes/No
S	PLASTER	11	NONE DETECTED	6,100 S	CUSTODIAL STORAGE 1, BOY'S & GIRL'S RESTROOMS, RESTROOMS 1 & 2, HALL, STORAGE 2, YARD STORAGE, AND BOILER ROOM	(13) REPRESENTED BY SAMPLES HMS-MH-S23-04A-C COLLECTED ON 5-1-92.	N
M	9" VINYL FLOOR TILE (OFF-WHITE) & MASTIC	12	6%	4,160 S	RESTROOMS 1 & 2, HALL, CLASSROOMS 8-11, AND SCIENCE ROOM	(2) (5) RR1, RR2, & HALL. MISSING TILES AT HALL ENTRY (11) COVERED WITH CARPET IN CLASSROOMS 8-11 AND SCIENCE ROOM.	N
M	12" CEILING TILE (PIN DOT PATTERN) & MASTIC	19	NONE DETECTED	4,000 S	THROUGHOUT CLASSROOMS	(13)	N
M	12" CEILING TILE (1/8" HOLES PATTERN) & MASTIC	20	NONE DETECTED	2,200 S	THROUGHOUT CLASSROOMS	(13)	N
M	6" COVE BASE (BLUE) ADHESIVE	159	ASSUMED POSITIVE	230 L	SCIENCE ROOM, CLASSROOMS 8 & 12, AND ADJACENT CORRIDOR	(1) (4)	N
M	4" COVE BASE (BLACK) ADHESIVE	160	ASSUMED POSITIVE	840 L	HALL AND RESTROOMS 1 & 2, YARD STORAGE, AND STORAGE 2	(1) (4)	N
M	SHEET VINYL FLOORING (GRAY)	161	ASSUMED POSITIVE	70 S	WORK ROOM IN CLASSROOM 12	(1) (4)	N
M	4" COVE BASE (BLUE) ADHESIVE	162	ASSUMED POSITIVE	460 L	WORK ROOM (FKA: STAFF LOUNGE) & OFFICE IN CLASSROOM 12 AND CLASSROOMS 9, & 10	(1) (4)	N

C:\Users\selbert\Entek Consulting Group, Inc\Entekgroup - Documents\Clients\Center USD\20-5551 3 Yr Reinspections\Sites\McClellan HS\McClellan HMR.wpd

CONDITION CODE

General Condition: (1) Good (2) Damaged (3) Significantly Damaged (25% or more)
Change in Condition: (4) No (5) Yes (If Yes, explain under comments)
Abated: (6) Repaired (7) Removed (8) Encapsulated (9) Enclosed (10) Isolated & Restricted
Miscellaneous: (11) Inaccessible, no inspection data (12) Other (Explain under comments) (13) Non-Asbestos/Not Inspected

CONSULT ORIGINAL AND SUPPLEMENTARY INSPECTION REPORTS FOR MATERIALS WITH TRACE AMOUNTS OF ASBESTOS

THREE-YEAR REINSPECTION HOMOGENEOUS ACBM RECORDS

Date of Inspection: November 6, 2020

District: Center Unified School District

Inspector: Matt Reilly

School: McClellan High School

Building: Unit D (Classrooms 7-12 & Science Room)

Pg. 2 of 2

Material Class	Material	Homo. Mat. #	% Asb.	Ft ² /L.F.	Location	Condition: Code & Comments	Friable Yes/No
M	DRYWALL & JOINT COMPOUND	163	ASSUMED POSITIVE	2,000 S	STAFF LOUNGE, OFFICE, & ADJOINING CORRIDOR IN CLASSROOM 12 AND CLASSROOM 9	(1) (4)	N
M	12" VINYL FLOOR TILE (WHITE/ BLUE) & MASTIC	164	ASSUMED POSITIVE	400 S	CLASSROOMS 7 & 10	(1) (4)	N
S	TEXTURE ON PLASTER	171	ASSUMED POSITIVE	3,600 S	THROUGHOUT CLASSROOMS	(1) (4)	N
S	PLASTER	172	ASSUMED POSITIVE	3,600 S	THROUGHOUT CLASSROOMS	(1) (4)	N
M	12" VINYL FLOOR TILE (WHITE MOTTLED)	177	ASSUMED POSITIVE	50 S	SINK AT ROOM 8	(1) (4)	N

C:\Users\selbert\Entek Consulting Group, Inc\Entekgroup - Documents\Clients\Center USD\20-5551 3 Yr Reinspections\Sites\McClellan HS\McClellan HMR.wpd

CONDITION CODE

General Condition: (1) Good (2) Damaged (3) Significantly Damaged (25% or more)
Change in Condition: (4) No (5) Yes (If Yes, explain under comments)
Abated: (6) Repaired (7) Removed (8) Encapsulated (9) Enclosed (10) Isolated & Restricted
Miscellaneous: (11) Inaccessible, no inspection data (12) Other (Explain under comments) (13) Non-Asbestos/Not Inspected

CONSULT ORIGINAL AND SUPPLEMENTARY INSPECTION REPORTS FOR MATERIALS WITH TRACE AMOUNTS OF ASBESTOS

THREE-YEAR REINSPECTION HOMOGENEOUS ACBM RECORDS

Date of Inspection: November 6, 2020

District: Center Unified School District

Inspector: Matt Reilly

School: McClellan High School

Building: Unit E (Storage)

Material Class	Material	Homo. Mat. #	% Asb.	Ft ² /L.F.	Location	Condition: Code & Comments	Friable Yes/No
S	PLASTER	1	NONE DETECTED	2,500 S	THROUGHOUT	(13) REPRESENTED BY SAMPLES HMS-MH-S23-04A-C COLLECTED ON 5-1-92.	N
M	DRYWALL & JOINT COMPOUND	3	NONE DETECTED	600 S	THROUGHOUT	(13)	N

C:\Users\selbert\Entek Consulting Group, Inc\Entekgroup - Documents\Clients\Center USD\20-5551 3 Yr Reinspections\Sites\McClellan HS\McClellan HMR.wpd

CONDITION CODE

General Condition: (1) Good (2) Damaged (3) Significantly Damaged (25% or more)
Change in Condition: (4) No (5) Yes (If Yes, explain under comments)
Abated: (6) Repaired (7) Removed (8) Encapsulated (9) Enclosed (10) Isolated & Restricted
Miscellaneous: (11) Inaccessible, no inspection data (12) Other (Explain under comments) (13) Non-Asbestos/Not Inspected

CONSULT ORIGINAL AND SUPPLEMENTARY INSPECTION REPORTS FOR MATERIALS WITH TRACE AMOUNTS OF ASBESTOS

THREE-YEAR REINSPECTION HOMOGENEOUS ACBM RECORDS

Date of Inspection: November 6, 2020

District: Center Unified School District

Inspector: Matt Reilly

School: McClellan High School

Building: Weight Room

Material Class	Material	Homo. Mat. #	% Asb.	Ft ² /L.F.	Location	Condition: Code & Comments	Friable Yes/No
M	DRYWALL	111	ASSUMED POSITIVE	1000 S	WEIGHT ROOM	(11) DRYWALL IS ASSUMED POSITIVE TO EXIST BEHIND ALL WALL SURFACES.	N
M	12" VINYL FLOOR TILE (PURPLE) & MASTIC	112	ASSUMED POSITIVE	200 S	WEIGHT ROOM	(2) (5) CRACKED TILES AT FREE WEIGHT AREA	N
M	12" VINYL FLOOR TILE (GRAY) & MASTIC	113	ASSUMED POSITIVE	120 S	WEIGHT ROOM	(2) (5) CRACKED TILES AT FREE WEIGHT AREA	N
M	DRYWALL & JOINT COMPOUND	114	NONE DETECTED	1,400 S	WEIGHT ROOM	(13)	N
S	WALL TEXTURE (KNOCKDOWN STYLE)	173	ASSUMED POSITIVE	1,400 S	WEIGHT ROOM	(1) (4)	N
M	CARPET ADHESIVE	174	ASSUMED POSITIVE	UNDETERMINED	WEIGHT ROOM	(1)	N

C:\Users\selbert\Entek Consulting Group, Inc\Entekgroup - Documents\Clients\Center USD\20-5551 3 Yr Reinspections\Sites\McClellan HS\McClellan HMR.wpd

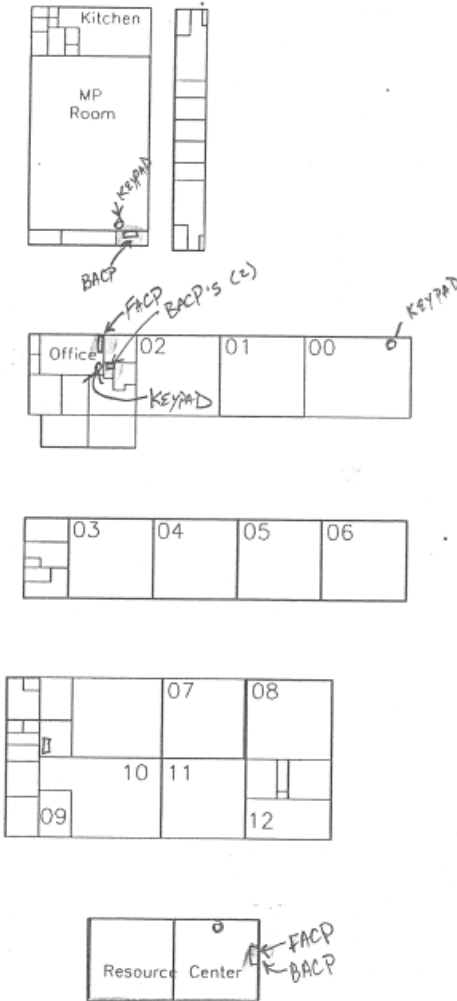
CONDITION CODE

General Condition: (1) Good (2) Damaged (3) Significantly Damaged (25% or more)
Change in Condition: (4) No (5) Yes (If Yes, explain under comments)
Abated: (6) Repaired (7) Removed (8) Encapsulated (9) Enclosed (10) Isolated & Restricted
Miscellaneous: (11) Inaccessible, no inspection data (12) Other (Explain under comments) (13) Non-Asbestos/Not Inspected

CONSULT ORIGINAL AND SUPPLEMENTARY INSPECTION REPORTS FOR MATERIALS WITH TRACE AMOUNTS OF ASBESTOS



McClellan High School



Center Unified School District
McClellan High School
8725 Watt Avenue
Antelope, CA 95843

Entek Consulting Group, Inc.
4200 Rocklin Road, Suite 7
Rocklin, CA 95677
Map Not to Scale

Cloud\ Clients\Center USD\20-5551\3 Yr Reinspections\Sites\McClellan HS

Three-Year AHERA Reinspection
Conducted by Matt Reilly
On November 6, 2020
Project Number 20-5551

Spinelli Elementary School

RECORD OF FRIABLE AND NON-FRIABLE ACM
(FORM B)

Inspection Date: November 6, 2020

THREE-YEAR REINSPECTION

SCHOOL Spinelli (Cyril) Elementary School					CDS CODE 34-73973-6032924
SCHOOL PHONE NUMBER (916) 338-6490					
ADDRESS 3401 Scotland Drive	(NUMBER)	(STREET)	(CITY) Antelope, CA	(ZIP) 95843	

-IMPORTANT-

Each building and functional space with friable ACBM or friable assumed ACBM listed on this form requires completion of FORM C (PHYSICAL AND HAZARD ASSESSMENT OF FRIABLE ACBM OR FRIABLE ASSUMED ACBM). Indicate location of material on blueprint, diagram or narrative in square or linear feet, and attach a copy (Sec. 763.93).

LINE	BUILDING NAME & FUNCTIONAL SPACE (Indicate Address if Different From Above)	CHECK ONE			CHECK ONE			
		SUR- FACING	TSI	MISC	ACBM		ASSUMED ACBM	
					FRIABLE	NON- FRIABLE	FRIABLE	NON- FRIABLE
1.	A - K-1 & K-2			X				X
2.	B - LIBRARY AND CLASSROOMS 2-6	X		X				X
3.	C - ADMINISTRATION	X		X				X
4.	FAN ROOM		X		X			
5.	CDC PORTABLES 1-3 DISTRICT MUST CERTIFY			X				X
6.	C-TRAIN NO SUSPECT ACBM							
7.	CLASSROOM 9 (ADULT EDUCATION OFFICE) DISTRICT MUST CERTIFY							
8.	D - MPR NO ACBM							
9.	E - CLASSROOMS 34-38			X				X
10.	G - CLASSROOMS 25-28	X		X		X		X
11.	H - CLASSROOMS 19-24	X		X		X		X
12.	K - CLASSROOMS 29-33			X				X
13.	M - CLASSROOMS 13-17 & RESTROOMS 18			X				X
14.	O - CLASSROOMS 10-12	X		X				X
15.	C-TRAIN NO SUSPECT ACBM							
16.								
17.								

See attached "Homogeneous Materials Records" for all materials and their locations by building. On Form B all buildings are listed and a summary of all non-friable and friable material is provided. Friable materials and their locations are listed separately under each building on Form B.

C:\Users\selbert\Entek Consulting Group, Inc\Entekgroup - Documents\Clients\Center USD\20-5551 3 Yr Reinspections\Sites\Spinelli ES\Spinelli Form B.wpd

THREE-YEAR REINSPECTION HOMOGENEOUS ACBM RECORDS

Date of Inspection: November 6, 2020

District: Center Unified School District

Inspector: Matt Reilly

School: Spinelli Elementary School

Building: A (K-1 & K-2)

Material Class	Material	Homo. Mat. #	% Asb.	Ft ² /L.F.	Location	Condition: Code & Comments	Friable Yes/No
S	PLASTER	1	NONE DETECTED	70 S	KINDERGARTEN RESTROOMS	(13) SAMPLE HMS-SE-S23-01B COLLECTED ON 5-8-92.	N
M	12" CEILING TILE (1/8" HOLES)	20	NONE DETECTED	2,400 S	KINDERGARTEN CLASSROOMS	(13) REPRESENTED BY SAMPLES HMS-CCSE-C506-20A-C COLLECTED ON 5-16-95.	N
M	DRYWALL & JOINT COMPOUND	25	ASSUMED POSITIVE	1,860 S	THROUGHOUT	(1) (4)	N
M	12" VINYL FLOOR TILE (GRAY MOTTLED) & MASTIC	191	ASSUMED POSITIVE	480 S	K-1 & K-2	(1) (4)	N
M	6" COVE BASE (GRAY) ADHESIVE	192	ASSUMED POSITIVE	240 L	K-1 & K-2	(1) (4)	N
M	CARPET ADHESIVE	193	ASSUMED POSITIVE	1,400 S	K-1 & K-2	(1) (4)	N

C:\Users\selbert\Entek Consulting Group, Inc\Entekgroup - Documents\Clients\Center USD\20-5551 3 Yr Reinspections\Sites\Spinelli ES\Spinelli HMR.wpd

CONDITION CODE

General Condition: (1) Good (2) Damaged (3) Significantly Damaged (25% or more)
Change in Condition: (4) No (5) Yes (If Yes, explain under comments)
Abated: (6) Repaired (7) Removed (8) Encapsulated (9) Enclosed (10) Isolated & Restricted
Miscellaneous: (11) Inaccessible, no inspection data (12) Other (Explain under comments) (13) Non-Asbestos/Not Inspected

CONSULT ORIGINAL AND SUPPLEMENTARY INSPECTION REPORTS FOR MATERIALS WITH TRACE AMOUNTS OF ASBESTOS

THREE-YEAR REINSPECTION HOMOGENEOUS ACBM RECORDS

Date of Inspection: November 6, 2020

District: Center Unified School District

Inspector: Matt Reilly

School: Spinelli Elementary School

Building: B (Library & Classrooms B2-B6)

Material Class	Material	Homo Mat. #	% Asb.	Ft ² /L.F.	Location	Condition: Code & Comments	Friable Yes/No
S	PLASTER	1	NONE DETECTED	2,200 S	RESTROOMS, BOILER, CUSTODIAL ROOM, HALL, RESTROOM, AND STORAGE'S 1 & 2	(13) SAMPLE HMS-SE-S23-01A COLLECTED ON 5-8-92.	N
M	12" CEILING TILES (1/8" HOLES)	100	NONE DETECTED	6,000 S	CLASSROOMS B2-B6	(13) REPRESENTED BY SAMPLES HMS-CCSE-C506-20A-C COLLECTED ON 5-16-95.	N
M	DRYWALL & JOINT COMPOUND	154	NONE DETECTED	1,500 S	CLASSROOM B4 AND LIBRARY	(13) SAMPLE ECG-07-737-150A COLLECTED ON 2-25-08	N
S	TEXTURE (KNOCKDOWN STYLE)	178	NONE DETECTED	1,500 S	CLASSROOM B4 AND B5, LIBRARY	(7) MATERIAL NOT FOUND IN ROOM B4. (13) SAMPLES ECG-178A & B COLLECTED ON 2-25-08.	N
M	12" VINYL FLOOR TILE (GRAY MOTTLED) & MASTIC	191	ASSUMED POSITIVE	720 S	CLASSROOMS B2-B6 AT ENTRANCE, CUSTODIAN & TOILET	(1) (4)	N
M	6" COVE BASE (GRAY) ADHESIVE	192	ASSUMED POSITIVE	720 L	CLASSROOMS B1-B6	(1) (4)	N
M	CARPET ADHESIVE	193	ASSUMED POSITIVE	4,500 S	CLASSROOMS B1-B6	(1) (4)	N

C:\Users\selbert\Entek Consulting Group, Inc\Entekgroup - Documents\Clients\Center USD\20-5551 3 Yr Reinspections\Sites\Spinelli ES\Spinelli HMR.wpd

CONDITION CODE

General Condition: (1) Good (2) Damaged (3) Significantly Damaged (25% or more)
Change in Condition: (4) No (5) Yes (If Yes, explain under comments)
Abated: (6) Repaired (7) Removed (8) Encapsulated (9) Enclosed (10) Isolated & Restricted
Miscellaneous: (11) Inaccessible, no inspection data (12) Other (Explain under comments) (13) Non-Asbestos/Not Inspected

CONSULT ORIGINAL AND SUPPLEMENTARY INSPECTION REPORTS FOR MATERIALS WITH TRACE AMOUNTS OF ASBESTOS

THREE-YEAR REINSPECTION HOMOGENEOUS ACBM RECORDS

Date of Inspection: November 6, 2020

District: Center Unified School District

Inspector: Matt Reilly

School: Spinelli Elementary School

Building: C (Administration)

Page 1 of 2

Material Class	Material	Homo Mat. #	% Asb.	Ft ² /L.F.	Location	Condition: Code & Comments	Friable Yes/No
S	PLASTER	1	NONE DETECTED	6,160 S	FAN ROOM AND STORAGE ROOM	(13) SAMPLES HMS-SE-S23-01C COLLECTED ON 5-8-92 AND ECG-07-737-1A COLLECTED ON 2-25-08.	N
T	MUDDIED FITTINGS	7	20-30% CHRYSOTILE	2 EACH	FAN ROOM	(1) (4) TWO MUDDIED FITTINGS ARE VISIBLE. ADDITIONAL TSI IS ASSUMED TO EXIST IN WALL CAVITIES AND ATTIC SPACE.. SAMPLE # 07A-C FAN ROOM ACCESS DOOR IS IN RESTROOM	Y
M	12" CEILING TILE (1/8" HOLES)	101	NONE DETECTED	1,200 S	ADMINISTRATION	(13) REPRESENTED BY SAMPLES HMS-CCSE-C506-20A-C COLLECTED ON 5-16-95.	N
M	DRYWALL & JOINT COMPOUND	161	NONE DETECTED	4,000 S	ADMINISTRATION, OFFICE 1 & 2, NURSE'S OFFICE & RESTROOM, STORAGE ROOMS, STAFF LOUNGE, RESTROOMS 1 & 2, AND TELEPHONE EQUIPMENT ROOMS.	(13) SAMPLES ECG-07-737-161A-C COLLECTED ON 2-25-08.	N
S	TEXTURE (ORANGE PEEL STYLE)	179	NONE DETECTED	3,000 S	ADMINISTRATION OFFICES	(13) SAMPLES ECG-07-737-179A-C COLLECTED ON 2-25-08.	N
M	2' X 4' CEILING PANELS (FISSURE PATTERN)	180	NONE DETECTED	216 S	PRINCIPAL'S SECRETARY'S OFFICE	(13) SAMPLES ECG-07-737-180A & B COLLECTED ON 2-25-08.	N
M	DUCT SEAM TAPE	188	NONE DETECTED	UNDETERMINED	FAN ROOM ON HVAC DUCT	(13) SAMPLE ECG-07-737-188A COLLECTED ON 2-25-08.	N
M	12" VINYL FLOOR TILE (GRAY MOTTLED) & MASTIC	191	ASSUMED POSITIVE	150 S	ADMINISTRATION ENTRANCE, NURSE ROOM, AND ELECTRICAL ROOM	(1) (4)	N

C:\Users\selbert\Entek Consulting Group, Inc\Entekgroup - Documents\Clients\Center USD\20-5551 3 Yr Reinspections\Sites\Spinelli ES\Spinelli HMR.wpd

CONDITION CODE

General Condition: (1) Good (2) Damaged (3) Significantly Damaged (25% or more)
Change in Condition: (4) No (5) Yes (If Yes, explain under comments)
Abated: (6) Repaired (7) Removed (8) Encapsulated (9) Enclosed (10) Isolated & Restricted
Miscellaneous: (11) Inaccessible, no inspection data (12) Other (Explain under comments) (13) Non-Asbestos/Not Inspected

CONSULT ORIGINAL AND SUPPLEMENTARY INSPECTION REPORTS FOR MATERIALS WITH TRACE AMOUNTS OF ASBESTOS

THREE-YEAR REINSPECTION HOMOGENEOUS ACBM RECORDS

Date of Inspection: November 6, 2020

District: Center Unified School District

Inspector: Matt Reilly

School: Spinelli Elementary School

Building: C - Administration

Page 2 of 2

Material Class	Material	Homo Mat. #	% Asb.	Ft ² /L.F.	Location	Condition: Code & Comments	Friable Yes/No
M	6" COVE BASE (GRAY) ADHESIVE	192	ASSUMED POSITIVE	150 L	THROUGHOUT	(1) (4)	N
M	CARPET ADHESIVE	193	ASSUMED POSITIVE	1,500 S	THROUGHOUT	(1) (4)	N

C:\Users\selbert\Entek Consulting Group, Inc\Entekgroup - Documents\Clients\Center USD\20-5551 3 Yr Reinspections\Sites\Spinelli ES\Spinelli HMR.wpd

CONDITION CODE

General Condition: (1) Good (2) Damaged (3) Significantly Damaged (25% or more)

Change in Condition: (4) No (5) Yes (If Yes, explain under comments)

Abated: (6) Repaired (7) Removed (8) Encapsulated (9) Enclosed (10) Isolated & Restricted

Miscellaneous: (11) Inaccessible, no inspection data (12) Other (Explain under comments) (13) Non-Asbestos/Not Inspected

CONSULT ORIGINAL AND SUPPLEMENTARY INSPECTION REPORTS FOR MATERIALS WITH TRACE AMOUNTS OF ASBESTOS

THREE-YEAR REINSPECTION HOMOGENEOUS ACBM RECORDS

Date of Inspection: November 6, 2020

District: Center Unified School District

Inspector: Matt Reilly

School: Spinelli Elementary School

Building: D (MPR)

Material Class	Material	Homo. Mat. #	% Asb.	Ft ² /L.F.	Location	Condition: Code & Comments	Friable Yes/No
M	SHEET VINYL FLOORING (GRAY SAND PAPER PATTERN)	9	NONE DETECTED	1,417 S	RESTROOM/STORAGE AND KITCHEN	(13) SAMPLES HMS-SE-S23-09A-C COLLECTED ON 5-8-92 AND ECG-07-737-9A COLLECTED ON 2-25-08.	N
M	DRYWALL & JOINT COMPOUND	10	NONE DETECTED	14,200 S	RESTROOM/STORAGE, STAGE, KITCHEN, AND MPR	(13) SAMPLES HMS-SE-S23-10A-C COLLECTED ON 5-8-92 AND ECG-07-737-10A-C COLLECTED ON 2-25-08.	N
M	12" VINYL FLOOR TILE (BLUE & WHITE) WITH BLACK MASTIC	11	NONE DETECTED	2,829 S	MPR	(13) SAMPLES HMS-SE-S23-11A-C COLLECTED ON 5-8-92 AND ECG-07-737-11A COLLECTED ON 2-25-08.	N
M	12" CEILING TILE	12	NONE DETECTED	3,656 S	STAGE AND MPR	(13) SAMPLES HMS-SE-S23-12A-C COLLECTED ON 5-8-92.	N
M	SHEET VINYL FLOORING	13	NONE DETECTED	656 S	STAGE	(13) SAMPLES HMS-SE-S23-13A-C COLLECTED ON 5-8-92.	N
S	DRYWALL TEXTURE	189	NONE DETECTED	UNDETERMINED	RESTROOM/STORAGE, STAGE, KITCHEN, AND MPR	(13) SAMPLES ECG-07-737-186A-D COLLECTED ON 2-25-08.	N

C:\Users\selbert\Entek Consulting Group, Inc\Entekgroup - Documents\Clients\Center USD\20-5551 3 Yr Reinspections\Sites\Spinelli ES\Spinelli HMR.wpd

CONDITION CODE

General Condition: (1) Good (2) Damaged (3) Significantly Damaged (25% or more)
Change in Condition: (4) No (5) Yes (If Yes, explain under comments)
Abated: (6) Repaired (7) Removed (8) Encapsulated (9) Enclosed (10) Isolated & Restricted
Miscellaneous: (11) Inaccessible, no inspection data (12) Other (Explain under comments) (13) Non-Asbestos/Not Inspected

CONSULT ORIGINAL AND SUPPLEMENTARY INSPECTION REPORTS FOR MATERIALS WITH TRACE AMOUNTS OF ASBESTOS

THREE-YEAR REINSPECTION HOMOGENEOUS ACBM RECORDS

Date of Inspection: November 6, 2020

District: Center Unified School District

Inspector: Matt Reilly

School: Spinelli Elementary School

Building: E (Classrooms 34-38)

Material Class	Material	Homo. Mat. #	% Asb.	Ft ² /L.F.	Location	Condition: Code & Comments	Friable Yes/No
M	DRYWALL & JOINT COMPOUND	50	ASSUMED POSITIVE	5,760 S	CLASSROOMS 34-38	(11) ASSUMED TO EXIST BEHIND TAG BOARD.	N
M	12" VINYL FLOOR TILE & MASTIC	52	ASSUMED POSITIVE	540 S	CLASSROOMS 34-38	(11) ASSUMED TO EXIST UNDER CARPET.	N
M	4" COVE BASE (BLUE) ADHESIVE	164	ASSUMED POSITIVE	600 L	CLASSROOMS 35-38	(1)	N
M	2' X 4' CEILING PANELS	183	ASSUMED POSITIVE	1,000 S	CLASSROOM 38	(1) (4) SOME CEILING PANELS HAVE WATER STAINING. NO ACTIVE WATER LEAKS OBSERVED.	N
M	CARPET ADHESIVE	193	ASSUMED POSITIVE	4,000 S	CLASSROOMS 34-38	(1)	N
M	4" COVE BASE (BLACK) ADHESIVE	194	ASSUMED POSITIVE	120 L	CLASSROOM 34	(1)	N
M	2'X4' CEILING PANELS	N/A	NOT SUSPECT	3,600 S	CLASSROOMS 34-37	(13) VINYL COATED FIBERGLASS PANELS	N

C:\Users\selbert\Entek Consulting Group, Inc\Entekgroup - Documents\Clients\Center USD\20-5551 3 Yr Reinspections\Sites\Spinelli ES\Spinelli HMR.wpd

CONDITION CODE

General Condition: (1) Good (2) Damaged (3) Significantly Damaged (25% or more)
Change in Condition: (4) No (5) Yes (If Yes, explain under comments)
Abated: (6) Repaired (7) Removed (8) Encapsulated (9) Enclosed (10) Isolated & Restricted
Miscellaneous: (11) Inaccessible, no inspection data (12) Other (Explain under comments) (13) Non-Asbestos/Not Inspected

CONSULT ORIGINAL AND SUPPLEMENTARY INSPECTION REPORTS FOR MATERIALS WITH TRACE AMOUNTS OF ASBESTOS

THREE-YEAR REINSPECTION HOMOGENEOUS ACBM RECORDS

Date of Inspection: November 6, 2020

District: Center Unified School District

Inspector: Matt Reilly

School: Spinelli Elementary School

Building: G (Classrooms 25-28)

Material Class	Material	Homo Mat. #	% Asb.	Ft ² /L.F.	Location	Condition: Code & Comments	Friable Yes/No
M	DRYWALL & JOINT COMPOUND	10	NONE DETECTED	8,000 S	CLASSROOMS 25-28	(13) REPRESENTED BY SAMPLES HMS-SE-S23-10A-C COLLECTED ON 5-8-92.	N
M	12" CEILING TILE (FISSURE PATTERN)	12	NONE DETECTED	3,600 S	CLASSROOMS 25-28	(13) REPRESENTED BY SAMPLES HMS-SE-S23-12A-C COLLECTED ON 5-8-92.	N
M	12" VINYL FLOOR TILE (WHITE/GRAY) & MASTIC	14	1-5% IN MASTIC	480 S	CLASSROOMS 26 & 28	(1) (4)	N
M	4" COVE BASE (BLUE) ADHESIVE	166	ASSUMED POSITIVE	480 L	CLASSROOMS 25-28	(1) (4)	N
M	12" VINYL FLOOR TILE (LIGHT GRAY WITH RED STREAKS) & MASTIC	184	1-5% IN MASTIC	480 S	CLASSROOMS 25 & 27	(1) (4)	N
M	CARPET ADHESIVE	193	ASSUMED POSITIVE	3,200 S	CLASSROOMS 25-28	(1) (4)	N
S	WALL TEXTURE (KNOCKDOWN STYLE)	195	ASSUMED POSITIVE	UNDETERMINED	CLASSROOMS 25-28	(1) (4)	N

C:\Users\selbert\Entek Consulting Group, Inc\Entekgroup - Documents\Clients\Center USD\20-5551 3 Yr Reinspections\Sites\Spinelli ES\Spinelli HMR.wpd

CONDITION CODE

General Condition: (1) Good (2) Damaged (3) Significantly Damaged (25% or more)

Change in Condition: (4) No (5) Yes (If Yes, explain under comments)

Abated: (6) Repaired (7) Removed (8) Encapsulated (9) Enclosed (10) Isolated & Restricted

Miscellaneous: (11) Inaccessible, no inspection data (12) Other (Explain under comments) (13) Non-Asbestos/Not Inspected

CONSULT ORIGINAL AND SUPPLEMENTARY INSPECTION REPORTS FOR MATERIALS WITH TRACE AMOUNTS OF ASBESTOS

THREE-YEAR REINSPECTION HOMOGENEOUS ACBM RECORDS

Date of Inspection: November 6, 2020

District: Center Unified School District

Inspector: Matt Reilly

School: Spinelli Elementary School

Building: H (Classrooms 19-24)

Material Class	Material	Homo Mat. #	% Asb.	Ft ² /L.F.	Location	Condition: Code & Comments	Friable Yes/No
M	DRYWALL & JOINT COMPOUND	10	NONE DETECTED	15,500 S	CLASSROOMS 19-24	(13) REPRESENTED BY SAMPLES HMS-SE-S23-10A-C COLLECTED ON 5-8-92.	N
M	12" CEILING TILE (FISSURE PATTERN)	12	NONE DETECTED	5,400 S	CLASSROOMS 19-24	(13) REPRESENTED BY SAMPLES HMS-SE-S23-12A-C COLLECTED ON 5-8-92.	N
M	12" VINYL FLOOR TILE (WHITE /GRAY) & MASTIC	14	1-5% CHRYSOTILE (IN MASTIC)	720 S	CLASSROOMS 19, 21, & 23	(1) (4)	N
M	4" COVE BASE (BLUE) ADHESIVE	167	NONE DETECTED	720 L	CLASSROOMS 19-24	(13) SAMPLES ECG-07-737-167A & B COLLECTED ON 2-25-08.	N
M	12" VINYL FLOOR TILE (LIGHT GRAY WITH RED STREAKS) & MASTIC	185	1-5% CHRYSOTILE (IN MASTIC)	720 S	CLASSROOMS 20, 22, & 24	(1) (4)	N
S	TEXTURE (KNOCKDOWN STYLE)	186	NONE DETECTED	15,500 S	CLASSROOMS 19-24	(13) SAMPLES ECG-07-737-186A-D COLLECTED ON 2-25-08.	N
M	CARPET ADHESIVE	193	ASSUMED POSITIVE	4,800 S	CLASSROOMS 19-24	(1) (4)	N

C:\Users\selbert\Entek Consulting Group, Inc\Entekgroup - Documents\Clients\Center USD\20-5551 3 Yr Reinspections\Sites\Spinelli ES\Spinelli HMR.wpd

CONDITION CODE

General Condition: (1) Good (2) Damaged (3) Significantly Damaged (25% or more)
Change in Condition: (4) No (5) Yes (If Yes, explain under comments)
Abated: (6) Repaired (7) Removed (8) Encapsulated (9) Enclosed (10) Isolated & Restricted
Miscellaneous: (11) Inaccessible, no inspection data (12) Other (Explain under comments) (13) Non-Asbestos/Not Inspected

CONSULT ORIGINAL AND SUPPLEMENTARY INSPECTION REPORTS FOR MATERIALS WITH TRACE AMOUNTS OF ASBESTOS

THREE-YEAR REINSPECTION HOMOGENEOUS ACBM RECORDS

Date of Inspection: November 6, 2020

District: Center Unified School District

Inspector: Matt Reilly

School: Spinelli Elementary School

Building: K (Classrooms 29-33)

Material Class	Material	Homo Mat. #	% Asb.	Ft ² /L.F.	Location	Condition: Code & Comments	Friable Yes/No
M	DRYWALL & JOINT COMPOUND	17	NONE DETECTED	1,200 S	CLASSROOMS 29-33	(13) REPRESENTED BY SAMPLE HMS-SE-S23-17A COLLECTED ON 5-8-92. (11) DRYWALL ASSUMED TO EXIST BEHIND ALL WALL SURFACES.	N
M	12" VINYL FLOOR TILE & MASTIC	121	ASSUMED POSITIVE	450 S	CLASSROOMS 29-33	(11) ASSUMED TO EXIST UNDER CARPET.	N
M	4" COVE BASE (BLUE) ADHESIVE	168	ASSUMED POSITIVE	600 L	CLASSROOMS 29-33	(1) (4)	N
M	CARPET ADHESIVE	193	ASSUMED POSITIVE	4,000 S	CLASSROOMS 29-33	(1) (4)	N
M	2'X4' CEILING PANELS	N/A	NOT SUSPECT	4,500 S	CLASSROOMS 29-33	(13) VINYL COATED FIBERGLASS PANELS	N

C:\Users\selbert\Entek Consulting Group, Inc\Entekgroup - Documents\Clients\Center USD\20-5551 3 Yr Reinspections\Sites\Spinelli ES\Spinelli HMR.wpd

CONDITION CODE

General Condition: (1) Good (2) Damaged (3) Significantly Damaged (25% or more)
Change in Condition: (4) No (5) Yes (If Yes, explain under comments)
Abated: (6) Repaired (7) Removed (8) Encapsulated (9) Enclosed (10) Isolated & Restricted
Miscellaneous: (11) Inaccessible, no inspection data (12) Other (Explain under comments) (13) Non-Asbestos/Not Inspected

CONSULT ORIGINAL AND SUPPLEMENTARY INSPECTION REPORTS FOR MATERIALS WITH TRACE AMOUNTS OF ASBESTOS

THREE-YEAR REINSPECTION HOMOGENEOUS ACBM RECORDS

Date of Inspection: November 6, 2020

District: Center Unified School District

Inspector: Matt Reilly

School: Spinelli Elementary School

Building: M (Classrooms 13-17 & Restrooms 18)

Material Class	Material	Homo Mat. #	% Asb.	Ft ² /L.F.	Location	Condition: Code & Comments	Friable Yes/No
M	DRYWALL & JOINT COMPOUND	40	ASSUMED POSITIVE	5,760 S	CLASSROOMS 13-17, RESTROOMS 18	(11) ASSUMED TO EXIST BEHIND DRYWALL.	N
M	4" COVE BASE (BLUE) ADHESIVE	171	ASSUMED POSITIVE	720 L	CLASSROOMS 13-17, RESTROOMS 18	(1) (4)	N
M	CARPET ADHESIVE	193	ASSUMED POSITIVE	4,500 S	CLASSROOMS 13-17	(1) (4)	N
S	CEILING TEXTURE (KNOCKDOWN STYLE)	195	ASSUMED POSITIVE	500 S	RESTROOMS 18	(1) (4)	N
M	2'X4' CEILING PANELS	N/A	NOT SUSPECT	4,500 S	CLASSROOMS 13-17	(13) VINYL COATED FIBERGLASS PANELS	N/A

C:\Users\selbert\Entek Consulting Group, Inc\Entekgroup - Documents\Clients\Center USD\20-5551 3 Yr Reinspections\Sites\Spinelli ES\Spinelli HMR.wpd

CONDITION CODE

General Condition: (1) Good (2) Damaged (3) Significantly Damaged (25% or more)
Change in Condition: (4) No (5) Yes (If Yes, explain under comments)
Abated: (6) Repaired (7) Removed (8) Encapsulated (9) Enclosed (10) Isolated & Restricted
Miscellaneous: (11) Inaccessible, no inspection data (12) Other (Explain under comments) (13) Non-Asbestos/Not Inspected

CONSULT ORIGINAL AND SUPPLEMENTARY INSPECTION REPORTS FOR MATERIALS WITH TRACE AMOUNTS OF ASBESTOS

THREE-YEAR REINSPECTION HOMOGENEOUS ACBM RECORDS

Date of Inspection: November 6, 2020

District: Center Unified School District

Inspector: Matt Reilly

School: Spinelli Elementary School

Building: O (Classrooms 10-12)

Page 1 of 2

Material Class	Material	Homo Mat. #	% Asb.	Ft ² /L.F.	Location	Condition: Code & Comments	Friable Yes/No
M	DRYWALL & JOINT COMPOUND	60	NONE DETECTED	2,980 S	CLASSROOMS 10-12	(13) SAMPLE ECG-07-737-60A COLLECTED ON 2-25-08. (11) DRYWALL ASSUMED TO EXIST BEHIND TAG BOARD IN CLASSROOMS 11 & 12.	N
M	2' X 4' CEILING PANELS (FISSURE PATTERN)	61	NONE DETECTED	2,500 S	CLASSROOMS 10-12	(13) SAMPLE ECG-07-737-61A COLLECTED ON 2-25-08.	Y
M	SHEET VINYL FLOORING (GRAY)	172	NONE DETECTED	810 S	CLASSROOM 10	(13) SAMPLE ECG-07-737-150A COLLECTED ON 2-25-08.	N
M	4" COVE BASE (LIGHT BROWN) ADHESIVE	173	ASSUMED POSITIVE	120 S	CLASSROOM 10	(1) (4)	N
M	4" COVE BASE (BLUE) ADHESIVE	175	ASSUMED POSITIVE	240 S	CLASSROOMS 11 & 12	(1) (4)	N
M	12" VINYL FLOOR TILE (LIGHT BROWN MOTTLED) & MASTIC	176	ASSUMED POSITIVE	120 S	CLASSROOM 12	(1) (4)	N

C:\Users\selbert\Entek Consulting Group, Inc\Entekgroup - Documents\Clients\Center USD\20-5551 3 Yr Reinspections\Sites\Spinelli ES\Spinelli HMR.wpd

CONDITION CODE

General Condition: (1) Good (2) Damaged (3) Significantly Damaged (25% or more)

Change in Condition: (4) No (5) Yes (If Yes, explain under comments)

Abated: (6) Repaired (7) Removed (8) Encapsulated (9) Enclosed (10) Isolated & Restricted

Miscellaneous: (11) Inaccessible, no inspection data (12) Other (Explain under comments) (13) Non-Asbestos/Not Inspected

CONSULT ORIGINAL AND SUPPLEMENTARY INSPECTION REPORTS FOR MATERIALS WITH TRACE AMOUNTS OF ASBESTOS

THREE-YEAR REINSPECTION HOMOGENEOUS ACBM RECORDS

Date of Inspection: November 6, 2020

District: Center Unified School District

Inspector: Matt Reilly

School: Spinelli Elementary School

Building: O (Classrooms 10-12)

Page 2 of 2

Material Class	Material	Homo Mat. #	% Asb.	Ft ² /L.F.	Location	Condition: Code & Comments	Friable Yes/No
S	WALL TEXTURE (ORANGE PEEL STYLE)	187	ASSUMED POSITIVE	8,000 S	CLASSROOM 10	(1) (4)	N
M	12" VINYL FLOOR TILE (WHITE) & YELLOW MASTIC	190	NONE DETECTED	UNDETERMINED	CLASSROOM 12	(13) SAMPLE ECG-07-737-176A COLLECTED ON 2-25-08.	N
M	CARPET ADHESIVE	193	ASSUMED POSITIVE	2,500 S	CLASSROOMS 10, 11 & 12	(1) (4)	N
M	12" VINYL FLOOR TILE (DARK GRAY MOTTLED) & MASTIC	196	ASSUMED POSITIVE	UNDETERMINED	CLASSROOM 12	(1) (4)	N

C:\Users\selbert\Entek Consulting Group, Inc\Entekgroup - Documents\Clients\Center USD\20-5551 3 Yr Reinspections\Sites\Spinelli ES\Spinelli HMR.wpd

CONDITION CODE

General Condition: (1) Good (2) Damaged (3) Significantly Damaged (25% or more)

Change in Condition: (4) No (5) Yes (If Yes, explain under comments)

Abated: (6) Repaired (7) Removed (8) Encapsulated (9) Enclosed (10) Isolated & Restricted

Miscellaneous: (11) Inaccessible, no inspection data (12) Other (Explain under comments) (13) Non-Asbestos/Not Inspected

CONSULT ORIGINAL AND SUPPLEMENTARY INSPECTION REPORTS FOR MATERIALS WITH TRACE AMOUNTS OF ASBESTOS

ENTEK CONSULTING GROUP, INC.
ASSESSMENT OF TSI and/or FRIABLE MATERIAL

District: Center Unified School District

Date: November 6, 2020

School: Spinelli Elementary School

Inspector: Matt Reilly

Building & Location(s): C - Administration, Fan Room (FKA: Heater Room)

Sample #: 07A-C

% Asbestos-20-30% Chrysotile

Homogeneous Mat. #: 7

Material description: Mudded Fittings

Total amount of material this location: 2 EACH

Amount of friable material this location: 2 EACH

Damage	Local		Distributed		Damaged	0 %
Type of Damage	Air Erosion		Water		Flaking	
	Deterioration		Physical		Delamination	

Probable cause(s) of damage: NO DAMAGE OBSERVED.

POTENTIAL FOR DISTURBANCE				RESPONSE ACTIONS		PREVENTIVE MEASURES	
	H	M	L	Isolate/Restrict	X	Fix leaks	
Accessibility		X		Repair/Cleanup		Prevent water contact	X
Vibration			X	Enclose		Do not drill, cut, sand, or grind	X
Air Erosion			X	Remove	X	Do not affix signs	X
Water			X	Encapsulate		Avoid contact	X
Occupancy			X	O & M	X		

Assessment of Material Condition

Significantly Damaged
(Poor)

☐

Damaged
(Fair)

☐

Not damaged
(Good)

☒

Potential Damage: High

High Mod Low

High Mod Low

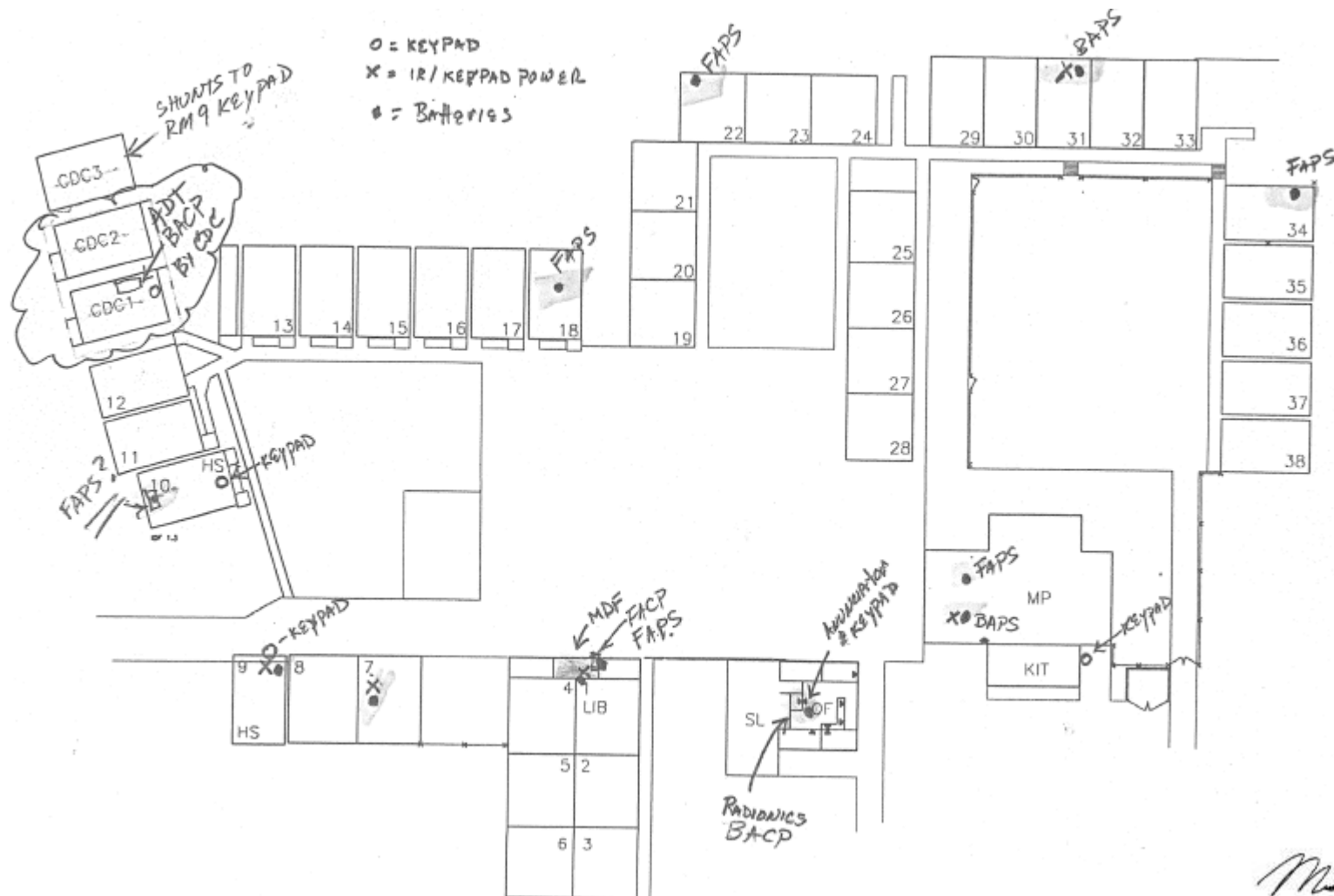
Hazard Ranking:

1 2 3 4 5 6 7

							X	
--	--	--	--	--	--	--	---	--

Comments & Observations: The access door to the fan room is located in the restroom. Include this material on all future 6 month periodic inspections. Inform all affected personnel of the material location, condition, asbestos content and handling procedures.

↑
N



Entek Consulting Group, Inc.
4200 Rocklin Road, Suite 7
Rocklin, CA 95677
Map Not to Scale

Three-Year AHERA Reinspection
Conducted by Matt Reilly
On November 6, 2020
Project Number 20-5551

SUPPORT DOCUMENTATION

State of California
Division of Occupational Safety and Health
Certified Asbestos Consultant

Matt J Reilly

Name

Certification No. **18-6208**

Expires on **04/18/21**



This certification was issued by the Division of Occupational Safety and Health as authorized by Sections 7180 et seq. of the Business and Professions Code.